

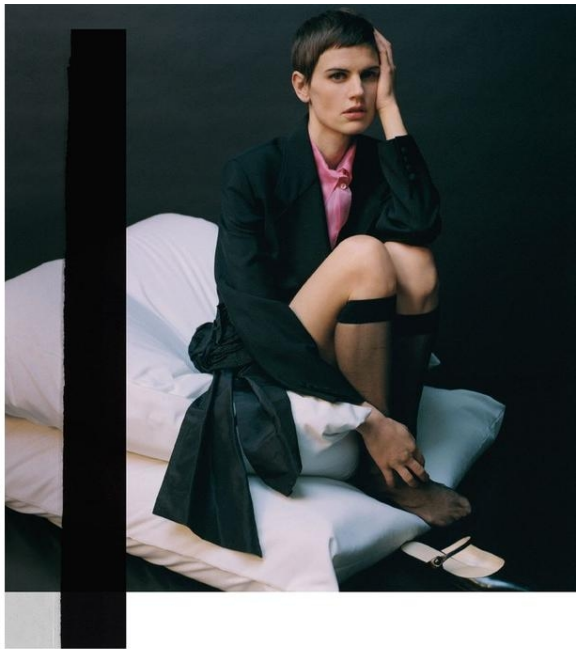
SASKIA DE BRAUW  
Self Service Spring Summer 2019  
Zoe Ghertner





# SASKIA DE BRAUW

HEIGHT 5'10 HAIR *BROWN* EYES *BROWN* BUST 33 WAIST 24 HIPS 34 1/2 SHOE 10



Previous spread: SASKIA WEARS A ROBE  
BLUÉ PRINTED SILK DRESS, STELLA  
MAC CARTNEY PRINTED SILK TAPERED  
BELT COAT. JANE. JANE. SASKIA WEARS  
A SHERIDAN SUEDE BOA COAT  
LORRAINE LORRAINE. BOA. BOA. BOA.  
SHERIDAN BOA. BOA. BOA. BOA. BOA.  
SASKIA WEARS A LONGER SILK COAT  
DRESS, THE ROBE.

# SASKIA DE BRAUW

HEIGHT 5'10 HAIR BROWN EYES BROWN BUST 33 WAIST 24 HIPS 34 1/2 SHOE 10



# SASKIA DE BRAUW

HEIGHT 5'10 HAIR BROWN EYES BROWN BUST 33 WAIST 24 HIPS 34 1/2 SHOE 10



The model SASKIA WEARS A PINK SATIN  
DRESS MADE IN ITALY BY THE DESIGNER  
FRANCO FERRI. SHE IS WEARING A  
BLACK TIGHT AND BLACK SHOES BY  
PRADA. HAIR BY L'ORÉAL PARIS AND  
MAKEUP BY L'ORÉAL PARIS. STYLING BY  
FRANCO FERRI. PHOTOGRAPHY BY  
FRANCO FERRI. ALL RIGHTS RESERVED.



# SASKIA DE BRAUW

HEIGHT 5'10 HAIR BROWN EYES BROWN BUST 33 WAIST 24 HIPS 34 1/2 SHOE 10





*This page:* SASKIA WEARS A BLACK VELVET DRESS, BALENCIAGA.  
*Opposite page:* KAREN WEARS A LONG BLACK SILK DRESS, DIOR, WHITE RUBBER SHOES, MARINE SERRE. HAIR BY RUDI LEWIS @ LGA MANAGEMENT. MAKEUP BY THOMAS DE KLUYVER @ ART PARTNER. MODELS: SASKIA DE BRAUW @ VIVA PARIS AND KAREN ELSON @ IMG. PHOTOGRAPHIC ASSISTANCE BY CALEB ADAMS AND TUCKER VANDER WYDEN. STYLING ASSISTANCE BY VICTOR CORDERO AND SHANT ALYANDYAN. HAIR ASSISTANCE BY ERICA LONG. MAKEUP ASSISTANCE BY LAUREN REYNOLDS. SET DESIGN BY SPENCER VROOMAN. SET DESIGN ASSISTANCE BY BRIAN STEINHOFF. PRODUCTION BY TRAVIS KIEWEL @ THAT ONE PRODUCTION.

# SASKIA DE BRAUW

HEIGHT 5'10 HAIR BROWN EYES BROWN BUST 33 WAIST 24 HIPS 34 1/2 SHOE 10