

HEIGHT *5'10 1/2*
HAIR *DARK BROWN*
EYES *BLUE*
BUST *31 1/2*
WAIST *23*
HIPS *34*
SHOE *7 1/2*

dna
MODEL MANAGEMENT LLC

555 WEST 25TH ST, 6TH FL NEW YORK, NY 10001 TEL. 212.226.0080 FAX 212.226.7711 dnamodels.com



KIKI WILLEMS



KIKI WILLEMS

HEIGHT 5'10 1/2 HAIR DARK BROWN EYES BLUE BUST 31 1/2 WAIST 23 HIPS 34 SHOE 7 1/2



Top and bag SECOND SKIN ARCHIVE, shorts stylist's own



T-shirt stylist's own

KIKI WILLEMS

HEIGHT 5'10 1/2 HAIR DARK BROWN EYES BLUE BUST 31 1/2 WAIST 23 HIPS 34 SHOE 7 1/2



Dress MISS NOTHING APPAREL.



Dress THE GROTESQUE ARCHIVE, tights stylist's own

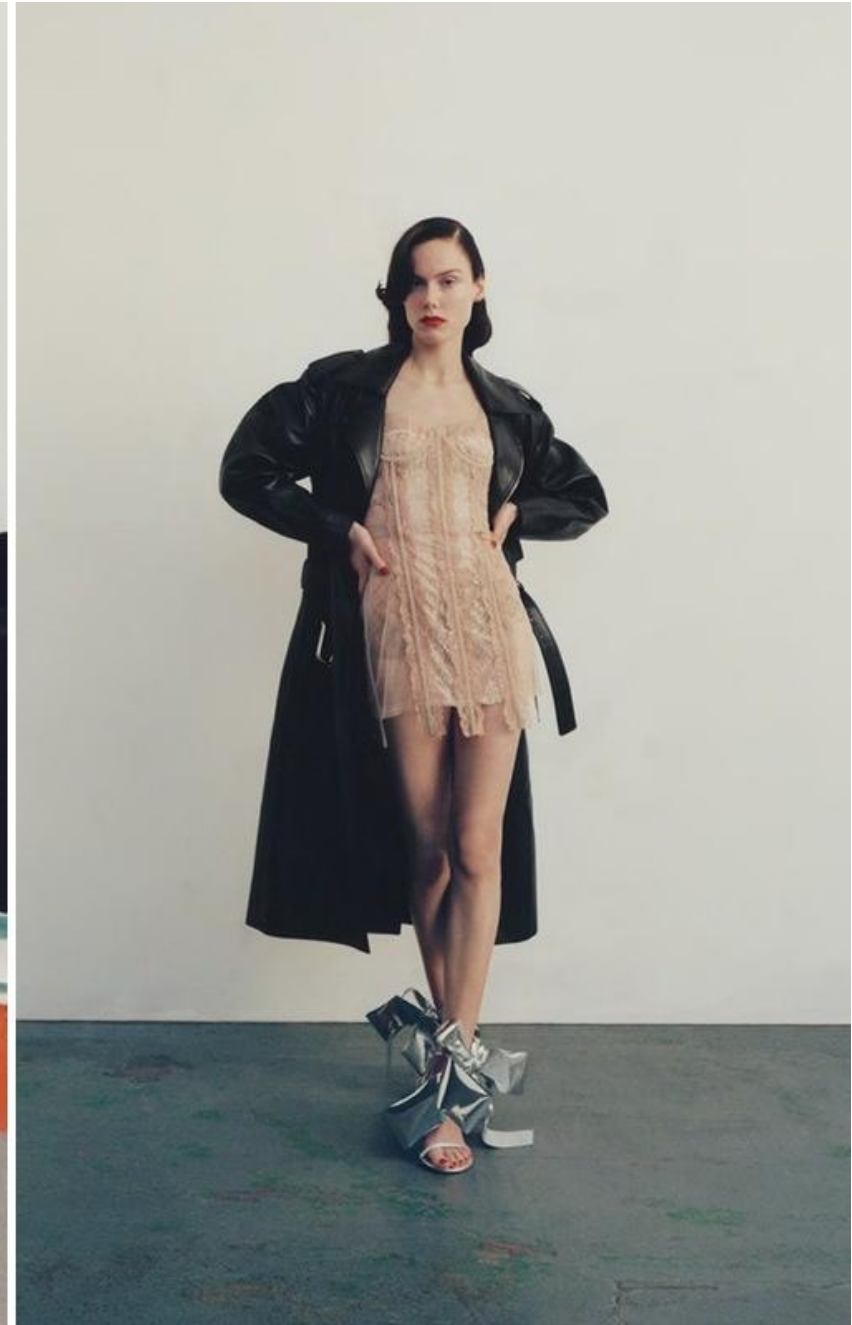
KIKI WILLEMS

HEIGHT 5'10 1/2 HAIR DARK BROWN EYES BLUE BUST 31 1/2 WAIST 23 HIPS 34 SHOE 7 1/2



KIKI WILLEMS

HEIGHT 5'10 1/2 HAIR DARK BROWN EYES BLUE BUST 31 1/2 WAIST 23 HIPS 34 SHOE 7 1/2



KIKI WILLEMS

HEIGHT 5'10 1/2 HAIR DARK BROWN EYES BLUE BUST 31 1/2 WAIST 23 HIPS 34 SHOE 7 1/2



CHAMPAGNE SILK SATIN HALTERNECK POLO RALPH LAUREN,
WITH BLACK SHOULDER TOP AND BLUE UPCYCLED SPORT LEGGINGS
SKIRT ELEANOR CHAPMAN

335

PURPLE



the 30 yrs issue
EMPORIO ARMANI by KATJA RAHLWES

KIKI WILLEMS

HEIGHT 5'10 1/2 HAIR DARK BROWN EYES BLUE BUST 31 1/2 WAIST 23 HIPS 34 SHOE 7 1/2



GRAY SKIRT, BRALETTE, AND WHITE AND BEIGE BRIEFS MIU MIU,
WITH GRAY CUT-OUT JACKET AND OFF-WHITE TANK TOP ELEANOR
CHAPMAN, CRYSTAL TOP LUDDIC DE SAINT SERIN,
GRAY JOGGERS CHLOÉ HARDIN, BLACK AND WHITE SHEER
STOCKINGS Y/PROJECT, WHITE SOCKS FALKE,
AND BLACK CLOSED-TOE HEELS WE11DONE



BLACK SHAP PANEL PULLOVER AND MAXI SKIRT Y/PROJECT,
WITH OFF-WHITE TANK TOPS BOTTEGA VENETA, BLACK AND IVORY
WRAP SKIRT KIERAN RODERICK, WHITE SOCKS FALKE,
AND BLACK CLOSED-TOE HEELS WE11DONE

KIKI WILLEMS

HEIGHT 5'10 1/2 HAIR DARK BROWN EYES BLUE BUST 31 1/2 WAIST 23 HIPS 34 SHOE 7 1/2



KIKI WILLEMS

HEIGHT 5'10 1/2 HAIR DARK BROWN EYES BLUE BUST 31 1/2 WAIST 23 HIPS 34 SHOE 7 1/2



KIKI WILLEMS

HEIGHT 5'10 1/2 HAIR DARK BROWN EYES BLUE BUST 31 1/2 WAIST 23 HIPS 34 SHOE 7 1/2



KIKI WILLEMS

HEIGHT 5'10 1/2 HAIR DARK BROWN EYES BLUE BUST 31 1/2 WAIST 23 HIPS 34 SHOE 7 1/2



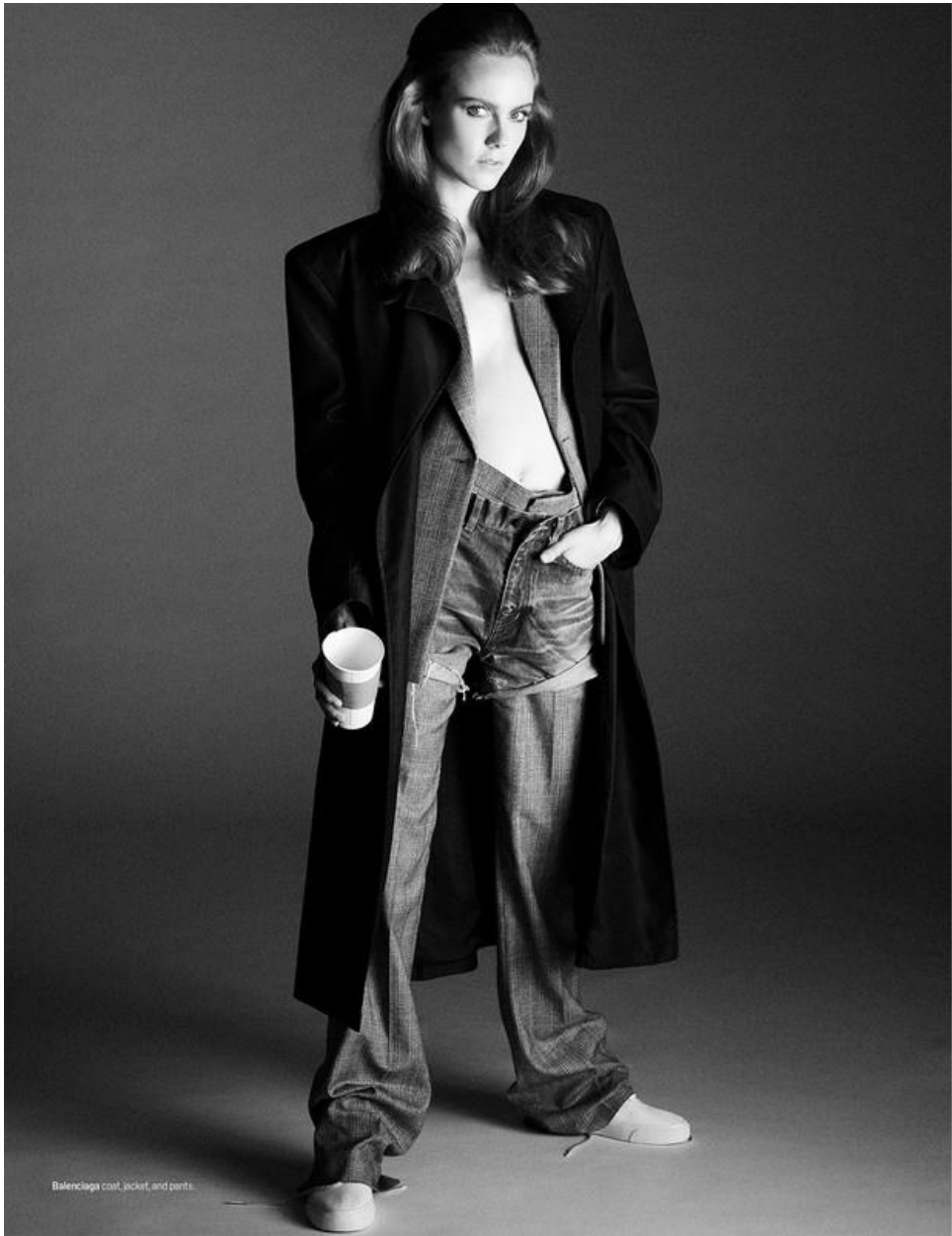
Barberry jacket and shorts;
Costume Studio London hat;
Celine by Hedi Slimane
socks; Marc Jacobs shoes.



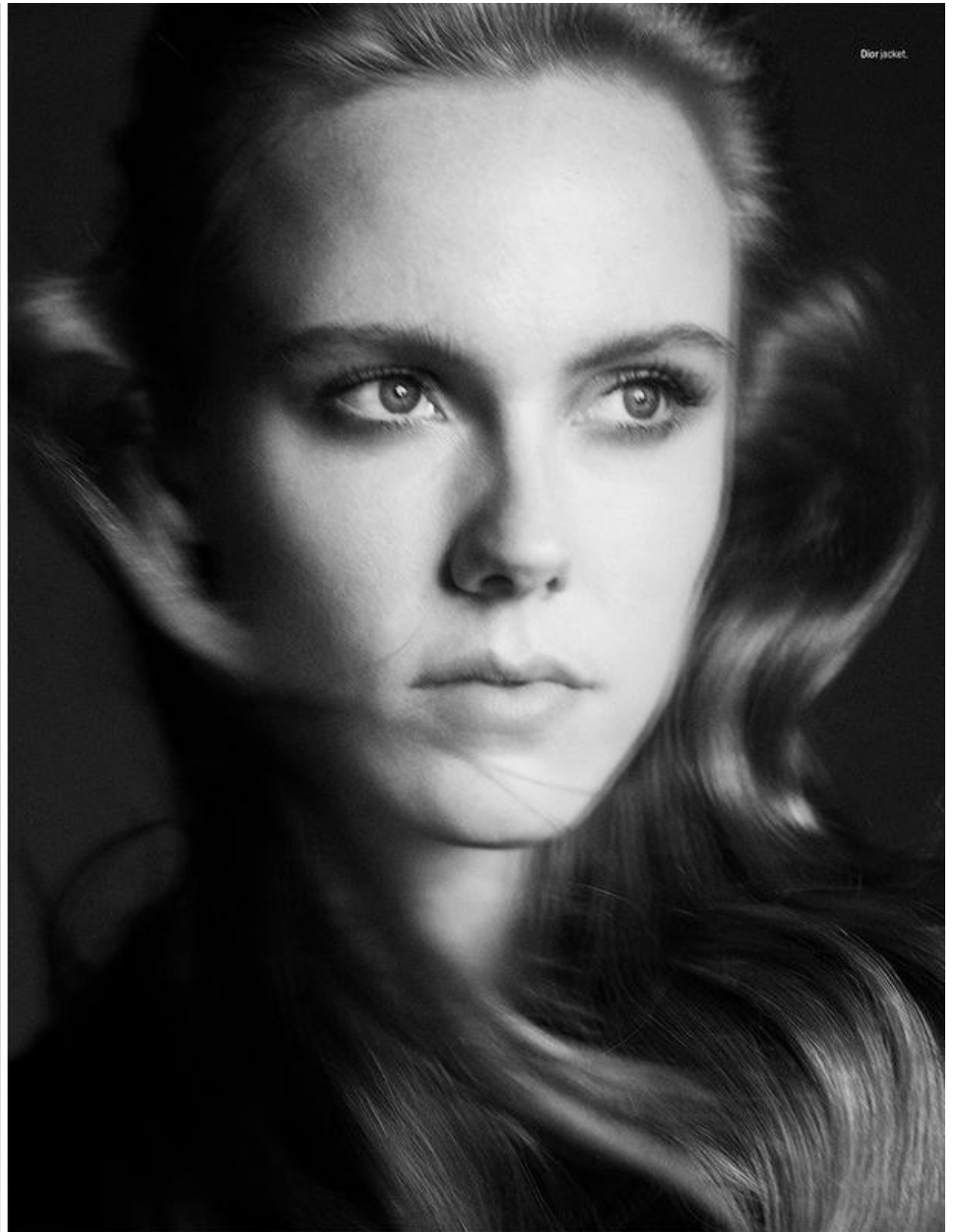
Coach sweater, shirt, and pants.

KIKI WILLEMS

HEIGHT 5'10 1/2 HAIR DARK BROWN EYES BLUE BUST 31 1/2 WAIST 23 HIPS 34 SHOE 7 1/2



Balenciaga coat, jacket, and pants.



Dior jacket.

KIKI WILLEMS

HEIGHT 5'10 1/2 HAIR DARK BROWN EYES BLUE BUST 31 1/2 WAIST 23 HIPS 34 SHOE 7 1/2



KIKI WILLEMS

HEIGHT 5'10 1/2 HAIR DARK BROWN EYES BLUE BUST 31 1/2 WAIST 23 HIPS 34 SHOE 7 1/2



Abito in georgette di seta e gonna con applicazioni di foglie di organza VALENTINO; guanti di pelle SERMONETA.
→ Nella pagina accanto.
Blazer di pelle con cuciture a contrasto MM6 MAISON MARGELA; camicia in crêpe di seta BALENCIAGA; gonna a pieghe di agnello lucido DIOR; guanti WING + WFT. Make-up Hannah Murray; Hair Tomo Jidi @ Streeters using Oribe. Set Design Gerard Santos. On set Travis Kivvel & Roberto Javier Sosa © That One Production.

KIKI WILLEMS

HEIGHT 5'10 1/2 HAIR DARK BROWN EYES BLUE BUST 31 1/2 WAIST 23 HIPS 34 SHOE 7 1/2



KIKI WILLEMS

HEIGHT 5'10 1/2 HAIR DARK BROWN EYES BLUE BUST 31 1/2 WAIST 23 HIPS 34 SHOE 7 1/2

RIKA



MAGAZINE

ISSUE NO. 21
A/W 2021



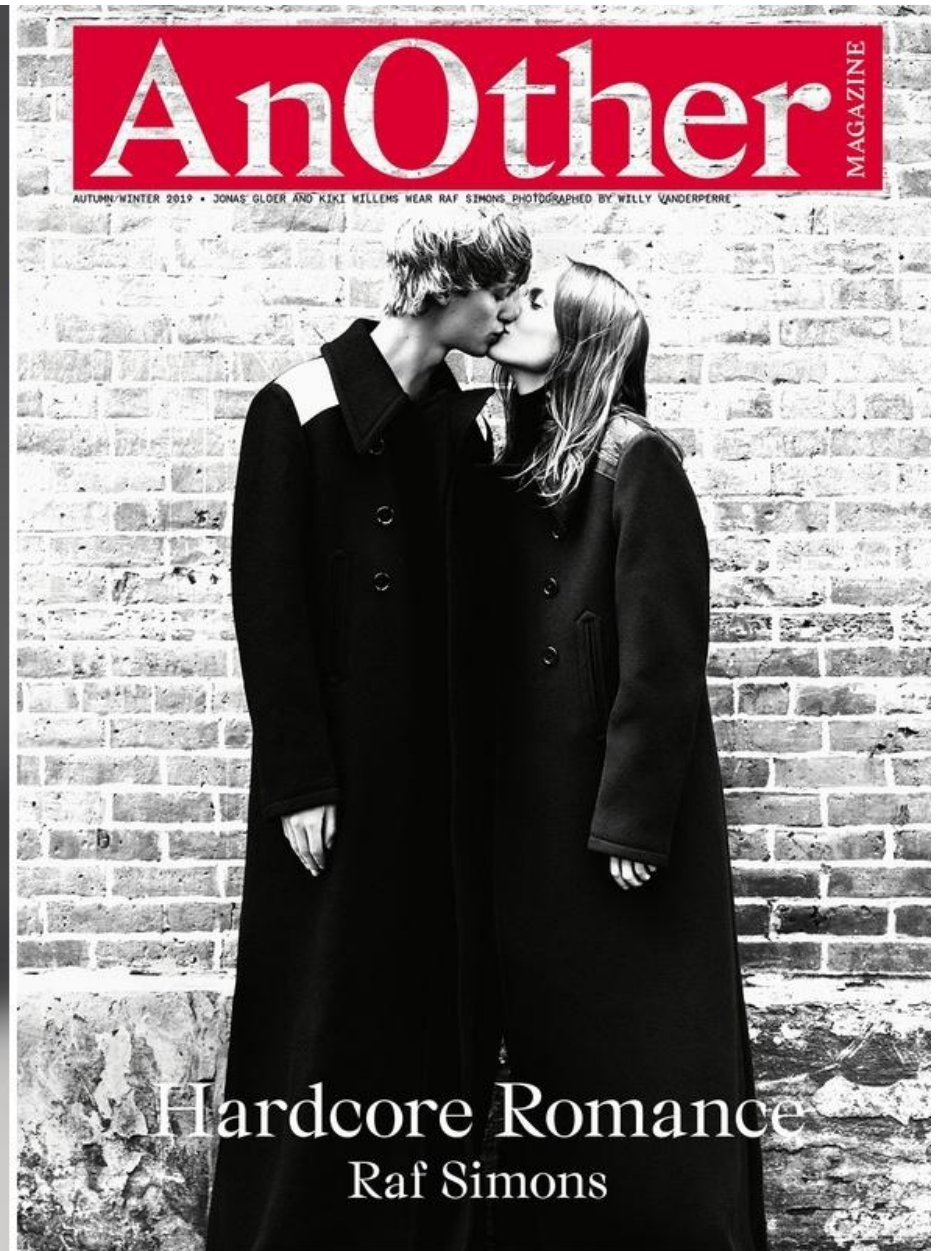
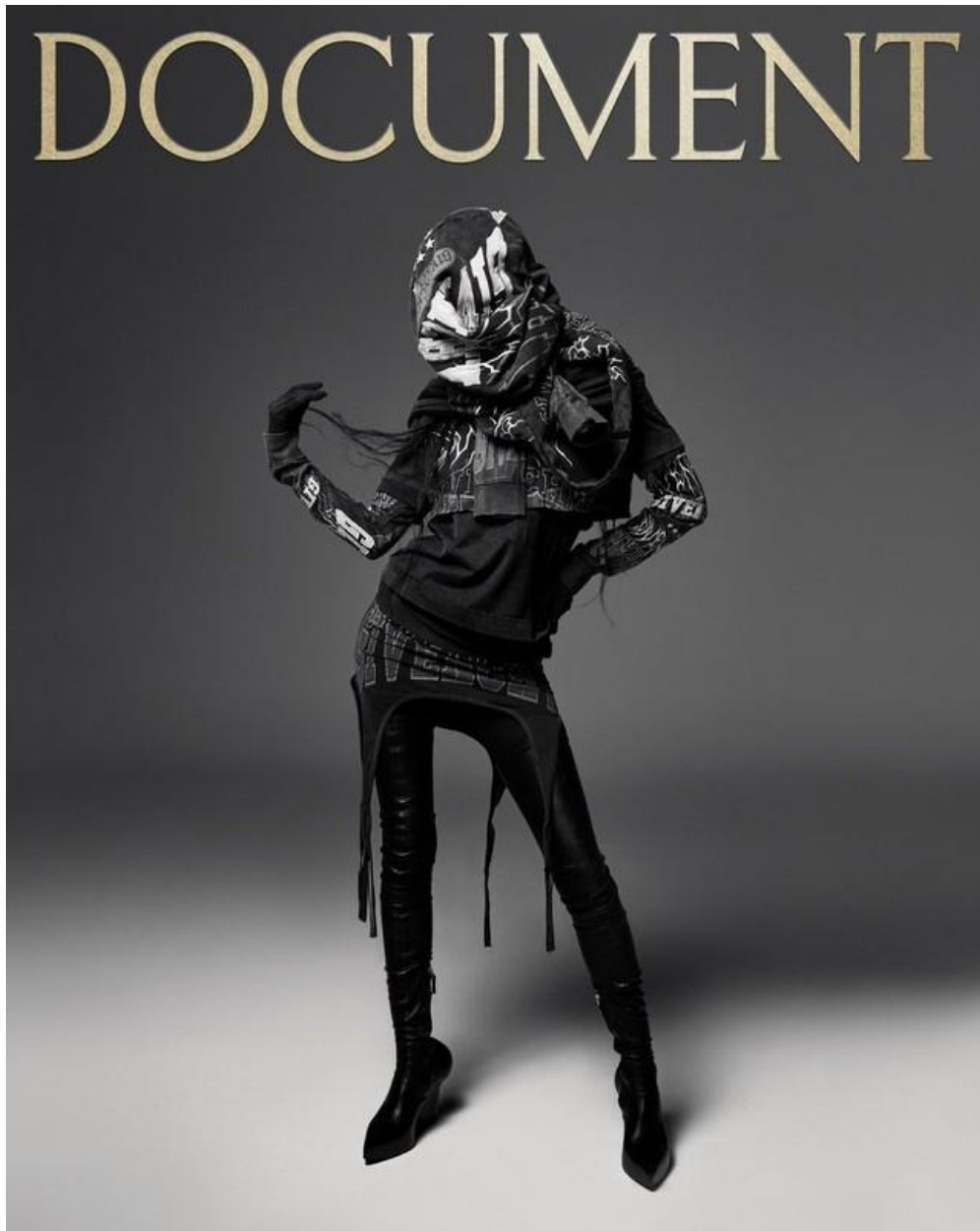
KIKI WILLEMS

HEIGHT 5'10 1/2 HAIR DARK BROWN EYES BLUE BUST 31 1/2 WAIST 23 HIPS 34 SHOE 7 1/2



KIKI WILLEMS

HEIGHT 5'10 1/2 HAIR DARK BROWN EYES BLUE BUST 31 1/2 WAIST 23 HIPS 34 SHOE 7 1/2



KIKI WILLEMS

HEIGHT 5'10 1/2 HAIR DARK BROWN EYES BLUE BUST 31 1/2 WAIST 23 HIPS 34 SHOE 7 1/2



KIKI WILLEMS

HEIGHT 5'10 1/2 HAIR DARK BROWN EYES BLUE BUST 31 1/2 WAIST 23 HIPS 34 SHOE 7 1/2



Kiki/12

KIKI WILLEMS

HEIGHT 5'10 1/2 HAIR DARK BROWN EYES BLUE BUST 31 1/2 WAIST 23 HIPS 34 SHOE 7 1/2