

HEIGHT 5'11
HAIR *BLONDE*
EYES *BLUE*
BUST 32
WAIST 23
HIPS 34
SHOE 9 1/2

dna
MODEL MANAGEMENT LLC

555 WEST 25TH ST, 6TH FL NEW YORK, NY 10001 TEL. 212.226.0080 FAX 212.226.7711 dnamodels.com



JULIA NOBIS

Chloé



Ferrari



JULIA NOBIS

HEIGHT 5'11 HAIR *BLONDE* EYES *BLUE* BUST 32 WAIST 23 HIPS 34 SHOE 9 1/2

Hermès



Coach



JULIA NOBIS

HEIGHT 5'11 HAIR *BLONDE* EYES *BLUE* BUST 32 WAIST 23 HIPS 34 SHOE 9 1/2

Vaquera



Dolce & Gabbana

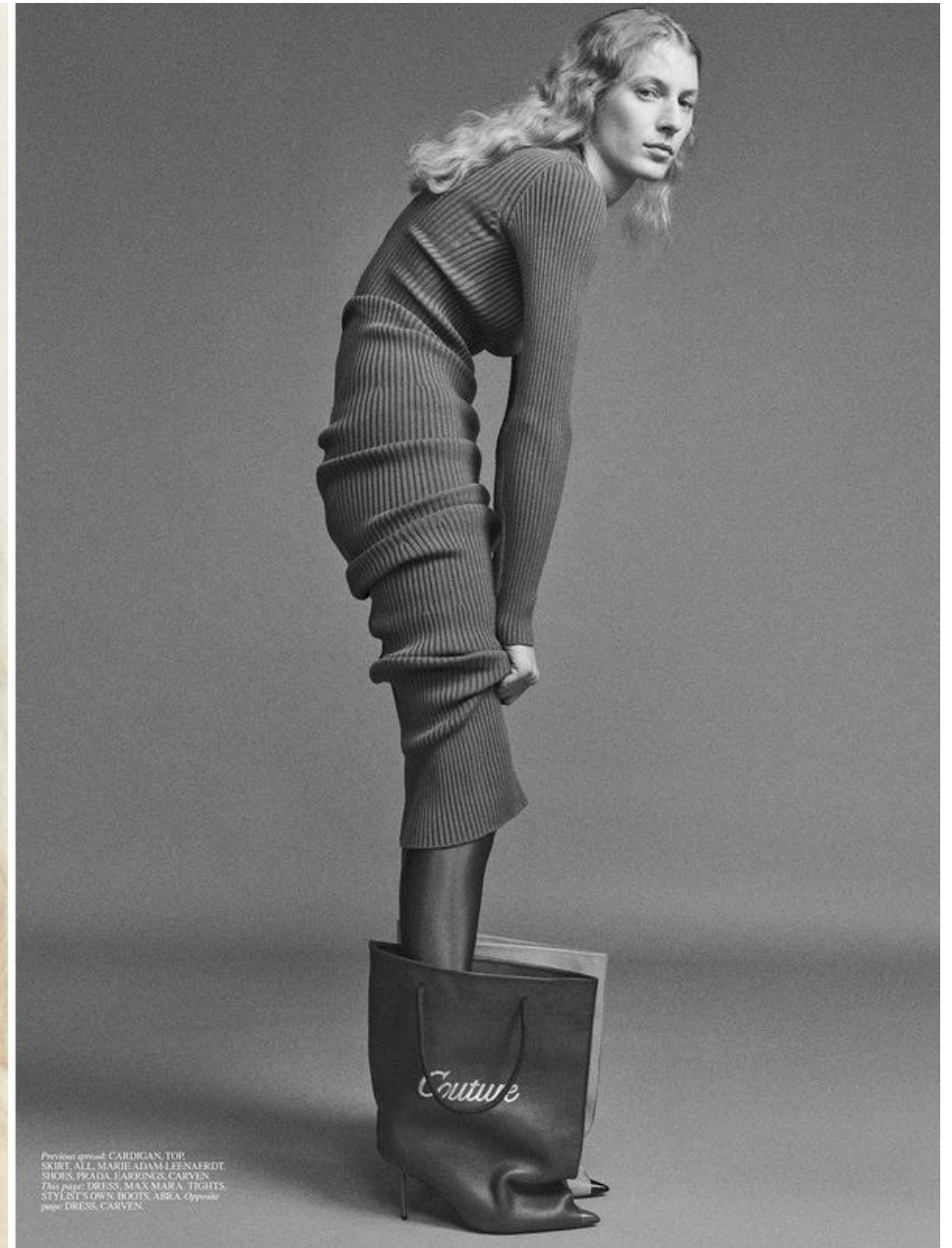


JULIA NOBIS

HEIGHT 5'11 HAIR *BLONDE* EYES *BLUE* BUST 32 WAIST 23 HIPS 34 SHOE 9 1/2



This page: TOP: FENDI; EARRINGS, BAILENTAGA; Opposite page: DRESS, NECKLACES, BOTH: CHANEL; TIGHTS, STYLIST'S OWN; EARRINGS, SAINT LAURENT BY ANTHONY VACCARELLO; NECKLACE, N°21 BY ALESSANDRO DELL'ACQUA.



Previous spread: CARDIGAN, TOP, SKIRT, ALL: MARIE-AIHAM LEENAERT; SHOES, PRADA; EARRINGS, CARVEN; This page: DRESS, MAX MARA; TIGHTS, STYLIST'S OWN; BOOTS, ARIA; Opposite page: DRESS, CARVEN.

JULIA NOBIS

HEIGHT 5'11 HAIR *BLONDE* EYES *BLUE* BUST 32 WAIST 23 HIPS 34 SHOE 9 1/2



This page: TOP, BRA, BOTH
VALENTINO. Opposite page: SUIT
JACKET, SHIRT, TROUSERS,
TIE, ALL SAINT LAURENT BY
ANTHONY VACCARELLO.



This page: TOP, SHIRT, BOTH,
PANTS, TIE, STYLIST'S OWN.
TARRINO, BAILEY & CO.
Opposite page: JUMPSUIT, SEE F.
PORTRAIT RESIDENCY BY
CHRISTOPHER KANE.

JULIA NOBIS

HEIGHT 5'11 HAIR *BLONDE* EYES *BLUE* BUST 32 WAIST 23 HIPS 34 SHOE 9 1/2



Camicia di cotone, Prada.
 Cappello di lana,
 da Les Moutons Carréon.
 Pigiama azzurro, Camicia
 e pantaloni di denim, Dior.
 Tights e scarpa, da
 La Compagnie du Costume.
 In tutto il servizio,
 Collana, Our Legacy.



CASTING Piergiorgio
 Del Moro and Giulia Massullo
 MODEL Julia Nobis
 @Viva Model Management
 MAKEUP Hiromi Ueda
 HAIR Damien Boissinot
 MANICURE Marie Rosa
 SET DESIGN Sophiear
 MAKEUP ASSISTANT
 Alexandra Leforestier
 HAIR ASSISTANT
 Tomohiro Inotsume
 SET DESIGN ASSISTANTS
 Joséphine Topolansk,
 Tom Châtenet,
 Perceval Rebeche
 STYLIST'S ASSISTANTS
 Conor Manning,
 Emelie Preber, Naomi Homs
 SEAMSTRESS Laura Bihl
 DIGITAL OPERATOR
 Nicolas Fallet
 DIGITAL OPERATOR
 ASSISTANT Kiara Chahira
 LIGHTING DIRECTOR
 Shri Parameswaran
 LIGHTING ASSISTANTS
 Paul Jedwab,
 Charles Hardouin
 PRODUCTION Endorphyn

JULIA NOBIS

HEIGHT 5'11 HAIR *BLONDE* EYES *BLUE* BUST 32 WAIST 23 HIPS 34 SHOE 9 1/2



Pull e cappello di lana.
Kerstin Adolphson.
T-shirt: A.P.C. Pantaloni
di cotone: Oni Legacy.
Tutto il resto.
Calze: Kerstin Adolphson.
Scarpe: Converse.
In apertura: Giacca di pelle,
felpa e pantaloni
tutto Polo Ralph Lauren.
Sneakers: Adidas.

JULIA NOBIS

HEIGHT 5'11 HAIR *BLONDE* EYES *BLUE* BUST 32 WAIST 23 HIPS 34 SHOE 9 1/2



Top by Irié, cape worn
as a skirt by Christian Dior,
shorts by Givenchy by
Sarah Burton and pumps
by Marie Adam-Leenaardt.



111
Dress by Prada.

JULIA NOBIS

HEIGHT 5'11 HAIR *BLONDE* EYES *BLUE* BUST 32 WAIST 23 HIPS 34 SHOE 9 1/2



*Julia wears hat, turtleneck, dress and belt by Pierre Cardin
and shoes by Bottega Veneta*

79



JULIA NOBIS

HEIGHT 5'11 HAIR *BLONDE* EYES *BLUE* BUST 32 WAIST 23 HIPS 34 SHOE 9 1/2



*Julia wears shorts, T-shirt and jacket by Rick Owens, catwalk by Yohji Yamamoto.
Opposite: Vintage pants by Comme des Garçons from 20Age Archive, cape by Maison Margiela, boots by Louis Vuitton.
Hair by Damien Boisvinat. Makeup by Hiroaki Ueda. Manicure by Elise Deslandes. Photography assistance by
Thomas Clarkson, Kevin Théard and Christian Mespands. Styling assistance by Xenia May Sattel. Tailoring by Laura Gjafferi.
Hair assistance by Kyoto Kibita. Makeup assistance by Miki. Post-production: Grain. Model: Julia Nobis*



JULIA NOBIS

HEIGHT 5'11 HAIR *BLONDE* EYES *BLUE* BUST 32 WAIST 23 HIPS 34 SHOE 9 1/2



JULIA NOBIS

HEIGHT 5'11 HAIR *BLONDE* EYES *BLUE* BUST 32 WAIST 23 HIPS 34 SHOE 9 1/2



70

PREVIOUS PAGE: JULIA WEARS: CAPE, RAY SIMONS, FW2002 / SKIRT, COMME DES GARÇONS, LATE 2000S / LACE UP PANTS, HELMUT LANG, FW2003 / WHITE RUBBER MILITARY SNOW BOOTS, WZII-ERA / ALL FASHION COURTESY DAVID CASAVANT ARCHIVE

THIS PAGE: JULIA WEARS: SAFETY PIN BELT, VERSACE, 1990S / DECONSTRUCTED PORTRAIT CURVED KNIT JEAN PAUL SAULTIER, AW2007 / CONVERTIBLE SKIRT TOP, MASON MARTIN MARGIELA, 1990S / KIKI PLATFORM BOOTS, MARC JACOBS, AW2014 / ALL FASHION COURTESY ARTIFACT NEW YORK

OPPOSITE PAGE: JULIA WEARS: VEST, RAY SIMONS, SS2003 / SLEEVE CUFFS, COMME DES GARÇONS / PANTS, VERSACE, 2000S / WHITE RUBBER MILITARY SNOW BOOTS, WZII-ERA / ALL FASHION COURTESY DAVID CASAVANT ARCHIVE



julia nobis, medicina

JULIA NOBIS

HEIGHT 5'11 HAIR *BLONDE* EYES *BLUE* BUST 32 WAIST 23 HIPS 34 SHOE 9 1/2

JULIA NOBIS



Dress - CHRISTOPHER AARON

THE TRAVEL ALMANAC

51

THE TRAVEL ALMANAC



Julia Nobis

DE/AT 20€ / UK 17€



JULIA NOBIS

HEIGHT 5'11 HAIR *BLONDE* EYES *BLUE* BUST 32 WAIST 23 HIPS 34 SHOE 9 1/2



JULIA NOBIS

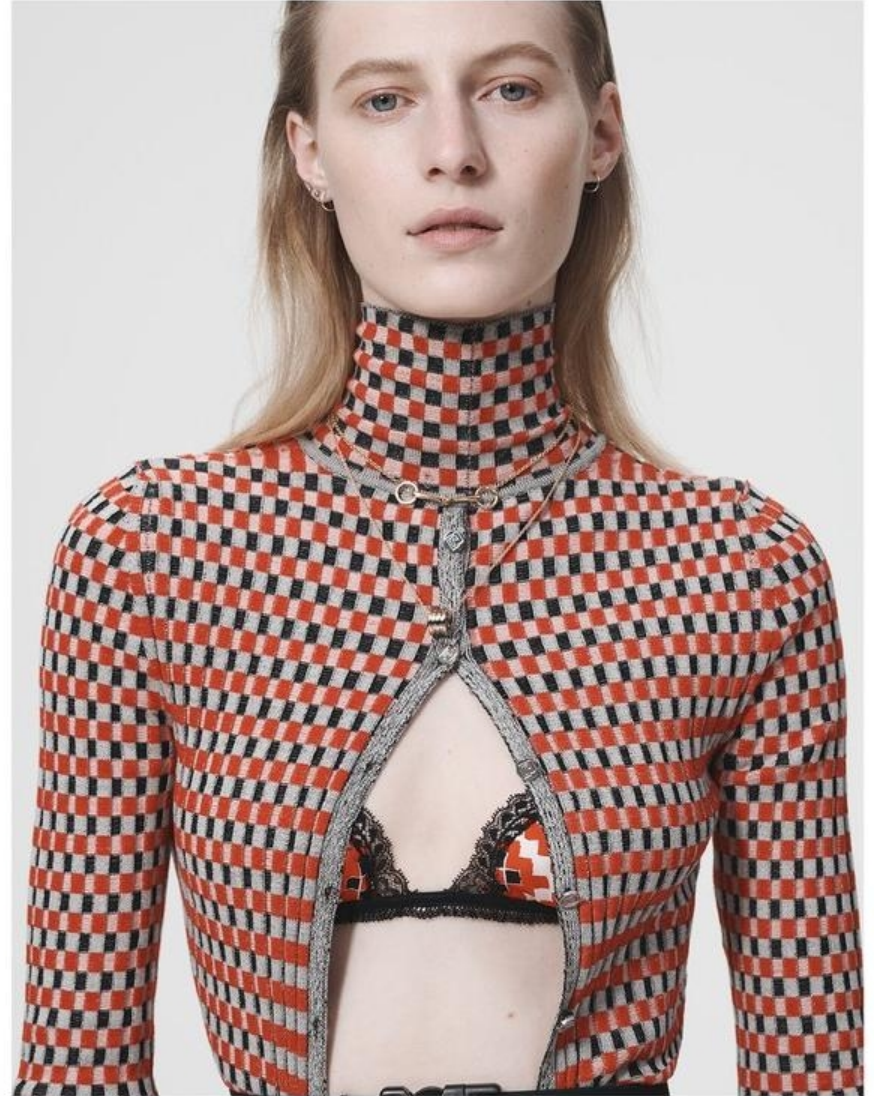
HEIGHT 5'11 HAIR *BLONDE* EYES *BLUE* BUST 32 WAIST 23 HIPS 34 SHOE 9 1/2

11 WANTED!



347

11 WANTED!



337

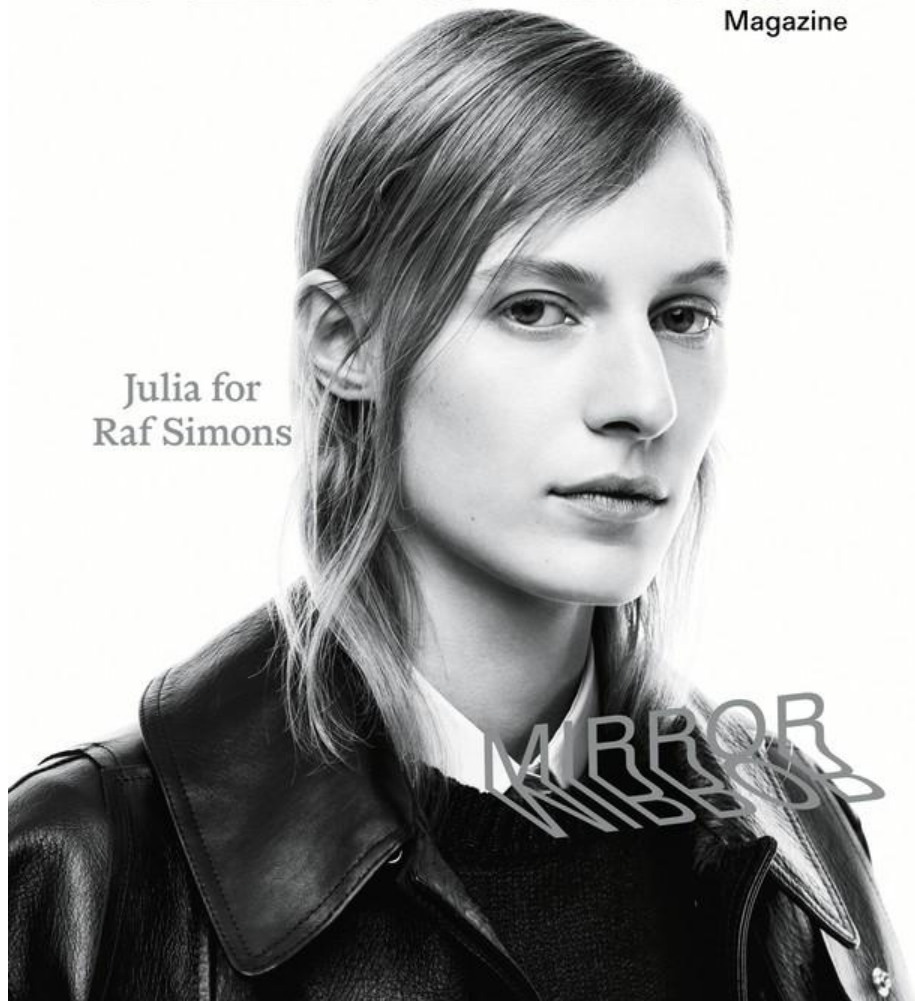
JULIA NOBIS

HEIGHT 5'11 HAIR *BLONDE* EYES *BLUE* BUST 32 WAIST 23 HIPS 34 SHOE 9 1/2

AnOther

Magazine

Julia for
Raf Simons



JULIA NOBIS

HEIGHT 5'11 HAIR *BLONDE* EYES *BLUE* BUST 32 WAIST 23 HIPS 34 SHOE 9 1/2



JULIA NOBIS

HEIGHT 5'11 HAIR *BLONDE* EYES *BLUE* BUST 32 WAIST 23 HIPS 34 SHOE 9 1/2



JULIA NOBIS

HEIGHT 5'11 HAIR *BLONDE* EYES *BLUE* BUST 32 WAIST 23 HIPS 34 SHOE 9 1/2



JULIA NOBIS

HEIGHT 5'11 HAIR *BLONDE* EYES *BLUE* BUST 32 WAIST 23 HIPS 34 SHOE 9 1/2



MARRY CHANEL'S MUDDY-BROWN WEATHERPROOFING WITH BLACK LEATHER HEADGEAR FOR A SENSUAL AFFAIR. THIS PAGE: WADED-COTTON COAT, \$6,040; CHANEL, WADED-COTTON CAPE, WORN ON SHOULDER, \$2,120; MIU MIU, COTTON SHIRT, \$640; PRADA, VINTAGE FLYING HELMET, FROM A SELECTION, THE VINTAGE SHOWROOM. SUBVERT FASHION'S OUTDOORSY TURN: PROENZA SCHOULER'S RUBBER-HAPPY TRENCH IS PRACTICAL AND PROVOCATIVE. OPPOSITE: TRENCH COAT, FROM A SELECTION; PROENZA SCHOULER, MEN'S COTTON SHIRT, £500; THE ROW, TIE, FROM A SELECTION; PRADA, WADERS, AS BEFORE; VINTAGE HOOD, FROM A SELECTION; THE VINTAGE SHOWROOM. LEATHER GLOVES, £462; RICK OWENS



JULIA NOBIS

HEIGHT 5'11 HAIR *BLONDE* EYES *BLUE* BUST 32 WAIST 23 HIPS 34 SHOE 9 1/2



photographed by STEVEN MEISEL
fashion editor JOE McKENNA
hair GUIDO PALAU *makeup* PAT McGRATH

JULIA NOBIS

HEIGHT 5'11 HAIR *BLONDE* EYES *BLUE* BUST 32 WAIST 23 HIPS 34 SHOE 9 1/2



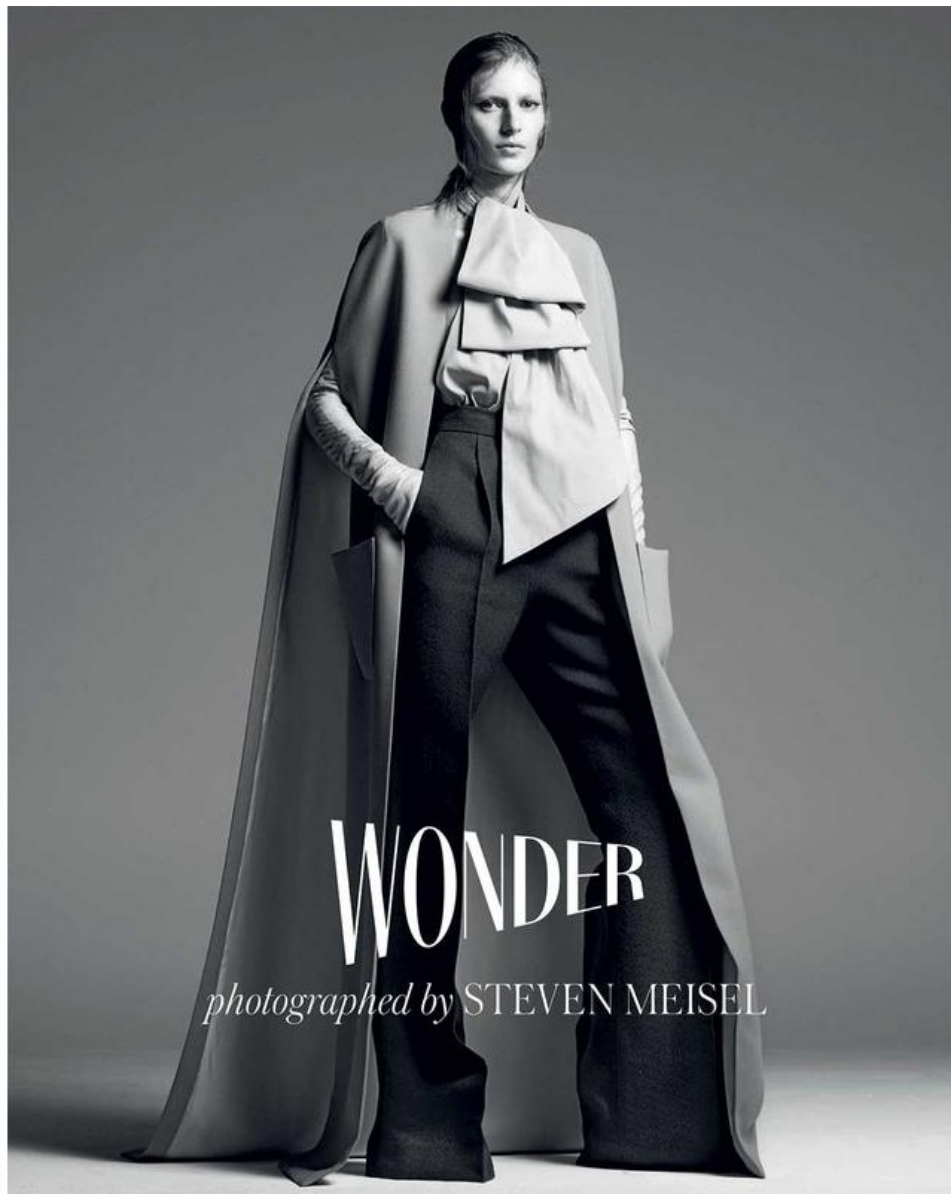
Abito di cotone tagliato al laser AZZEDINE ALIHA Costume 2014. Abito in seta con lacerazioni AZZEDINE ALIHA. Nella pagina accanto: Modelleria Sophia Linné per VALENTINO HAUTE COUTURE.



Julia Nobis in DNA Model Management: abito di seta e cotone tagliato, AZZEDINE ALIHA. Costume 2002. Nella pagina accanto: look di Marr a Supreme Management: abito di seta e cotone con bottoni in metallo e bottoni e strappi a zipa, CHANEL HAUTE COUTURE. In apertura, da sinistra, Capri di lana e seta di Chanel, look puntiforme di lana e seta di Emporio Armani, top di cotone e rafia, "Rosaire", VALENTINO HAUTE COUTURE. In pagina accanto: look di seta e cotone, "Orsola", di Fabio e Mariaroberta, VALENTINO HAUTE COUTURE.

JULIA NOBIS

HEIGHT 5'11 HAIR *BLONDE* EYES *BLUE* BUST 32 WAIST 23 HIPS 34 SHOE 9 1/2



JULIA NOBIS

HEIGHT 5'11 HAIR *BLONDE* EYES *BLUE* BUST 32 WAIST 23 HIPS 34 SHOE 9 1/2



JULIA NOBIS

HEIGHT 5'11 HAIR *BLONDE* EYES *BLUE* BUST 32 WAIST 23 HIPS 34 SHOE 9 1/2



JULIA NOBIS

HEIGHT 5'11 HAIR *BLONDE* EYES *BLUE* BUST 32 WAIST 23 HIPS 34 SHOE 9 1/2

Reflect!



Autonomy.

Julia Nobis.



JULIA NOBIS

HEIGHT 5'11 HAIR *BLONDE* EYES *BLUE* BUST 32 WAIST 23 HIPS 34 SHOE 9 1/2



JULIA NOBIS

HEIGHT 5'11 HAIR *BLONDE* EYES *BLUE* BUST 32 WAIST 23 HIPS 34 SHOE 9 1/2