

HEIGHT 5'7  
HAIR *BROWN*  
EYES *BROWN*  
BUST 32 1/2  
WAIST 24  
HIPS 34  
SHOE 8 1/2

**dna**  
MODEL MANAGEMENT LLC

555 WEST 25TH ST, 6TH FL NEW YORK, NY 10001 TEL 212.226.0080 FAX 212.226.7711 [dnamodels.com](http://dnamodels.com)



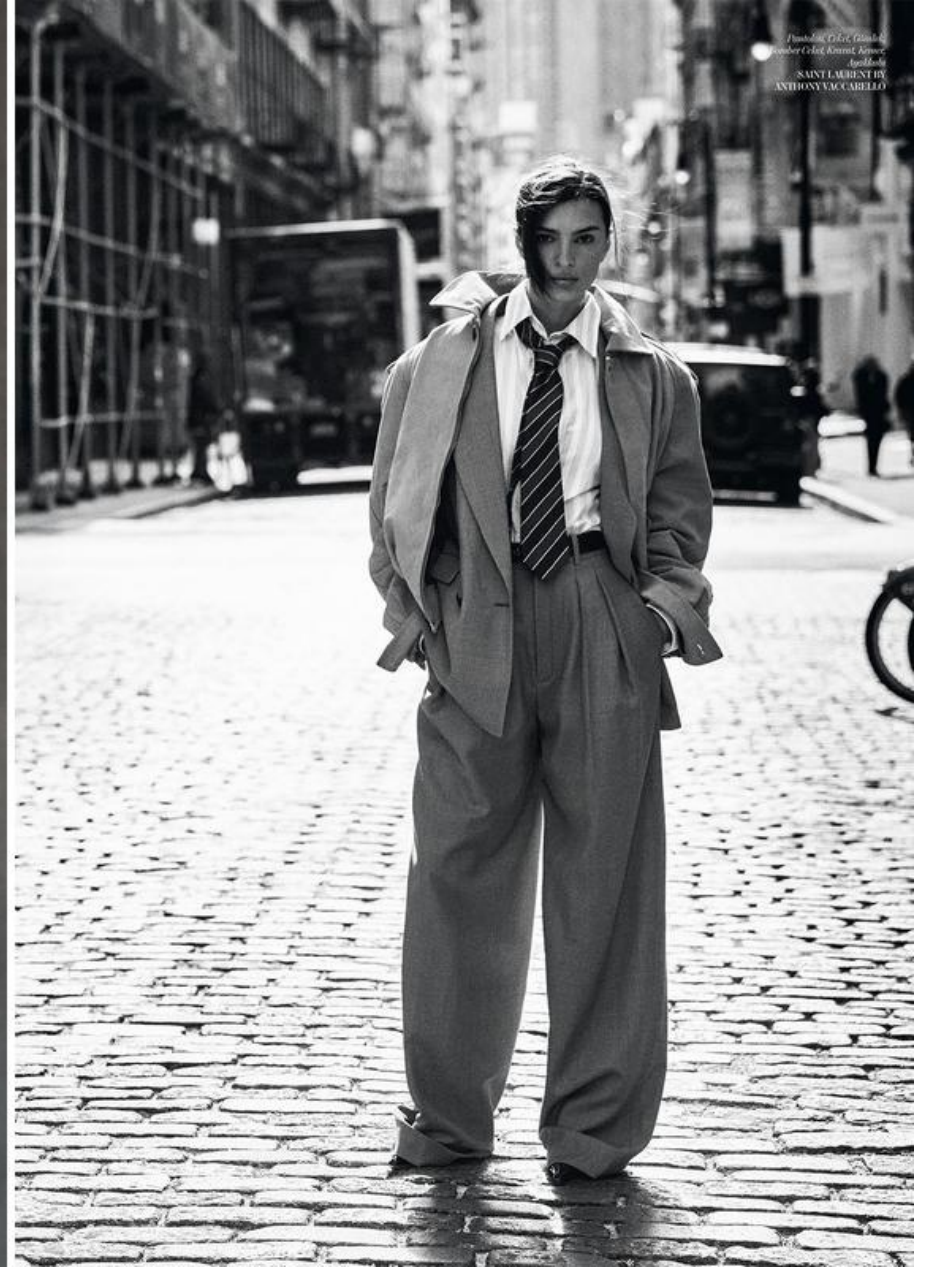
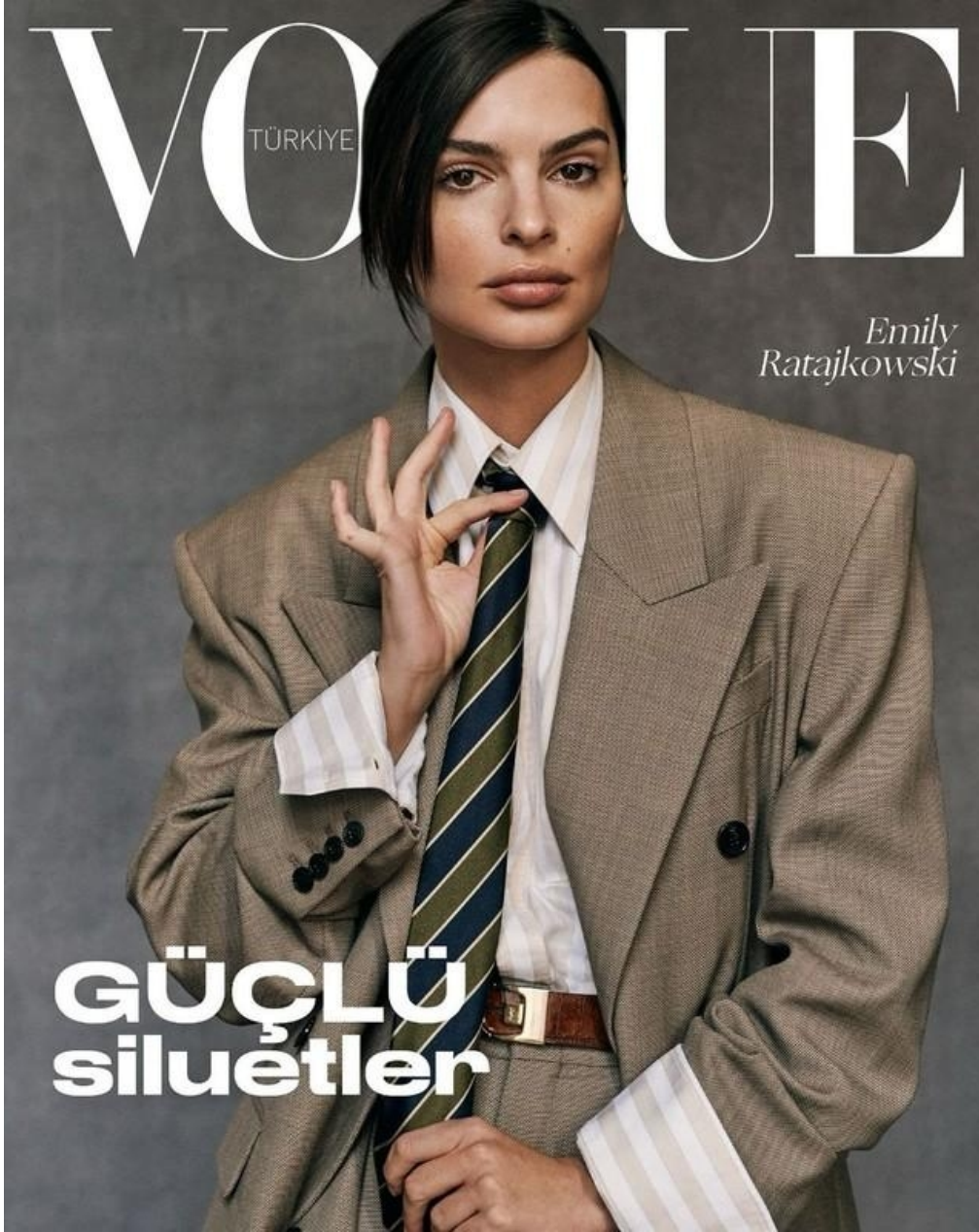
EMILY RATAJKOWSKI



# EMILY RATAJKOWSKI

HEIGHT 5'7 HAIR *BROWN* EYES *BROWN* BUST 32 1/2 WAIST 24 HIPS 34 SHOE 8 1/2





## EMILY RATAJKOWSKI

HEIGHT 5'7 HAIR BROWN EYES BROWN BUST 32 1/2 WAIST 24 HIPS 34 SHOE 8 1/2



# EMILY RATAJKOWSKI

HEIGHT 5'7 HAIR *BROWN* EYES *BROWN* BUST 32 1/2 WAIST 24 HIPS 34 SHOE 8 1/2





Mannequin : Emily Ratajkowski @VIVA PARIS - Assistants du photographe : AJ Numan, Bella Spörle, Jakob Müller-Meernach, Justine Paquette et Mathieu Boudang - Assistantes de la styliste : Elyse Arnould Derossier et Imène Duprat - Maquillage : Lauren Parsons @ARTPARTNER, assistée d'Anastasia Hess - Coiffure : Kiyoko Odo @BRYANT, assistée d'Yi-Han - Manucure : Cam Tran @ARTLIST - Scénographie : Nicolas Lallierand - Casting : Piergiorgio Del Moro @DMCASTING - Production : Louis 2 Paris

# EMILY RATAJKOWSKI

HEIGHT 5'7 HAIR *BROWN* EYES *BROWN* BUST 32 1/2 WAIST 24 HIPS 34 SHOE 8 1/2



# EMILY RATAJKOWSKI

HEIGHT 5'7 HAIR *BROWN* EYES *BROWN* BUST 32 1/2 WAIST 24 HIPS 34 SHOE 8 1/2





*Jacket, top, pants, briefs, and belt, MIU MIU.  
Ring, CARTIER.*



# EMILY RATAJKOWSKI

HEIGHT 5'7 HAIR BROWN EYES BROWN BUST 32 1/2 WAIST 24 HIPS 34 SHOE 8 1/2



# EMILY RATAJKOWSKI

HEIGHT 5'7 HAIR *BROWN* EYES *BROWN* BUST 32 1/2 WAIST 24 HIPS 34 SHOE 8 1/2



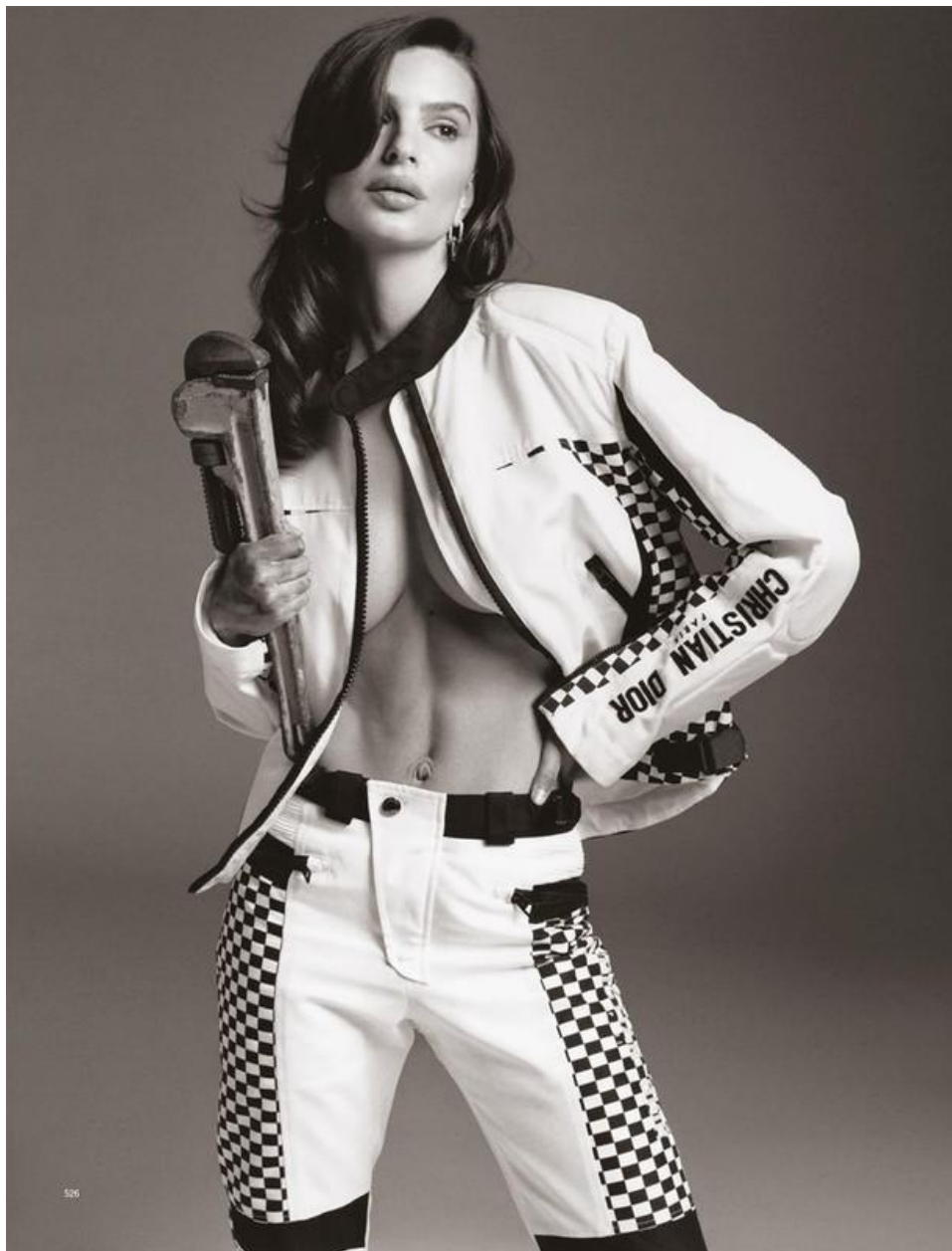


Robe et culotte, DOLCE & GABBANA. Boucles d'oreilles  
« Serpenti Viper » en or rose et diamants, BULGARI. Bagues « Bee My Love »  
en or jaune et diamants, CHAUMET. Bague « Trinity »  
en or gris, or jaune, or rose et diamants, CARTIER. Collant, FALKE.

NATHANIEL GOLDING

# EMILY RATAJKOWSKI

HEIGHT 5'7 HAIR *BROWN* EYES *BROWN* BUST 32 1/2 WAIST 24 HIPS 34 SHOE 8 1/2



# EMILY RATAJKOWSKI

HEIGHT 5'7 HAIR *BROWN* EYES *BROWN* BUST 32 1/2 WAIST 24 HIPS 34 SHOE 8 1/2





# EMILY RATAJKOWSKI

HEIGHT 5'7 HAIR *BROWN* EYES *BROWN* BUST 32 1/2 WAIST 24 HIPS 34 SHOE 8 1/2





#### TORY BURCH

In the dozen or so years that Tory Burch has been doing fashion shows, there have been few minidresses. Pencil skirts and full skirts with sweeping Claire McCordell-like volumes, yes, but rarely anything above the knees. That changed for spring 2024. "I'm not personally wearing the short hoop dress," modeled here in pink viscose jersey by her friend Emily Ratajkowski, Burch says, "but I wanted to really believe in it and love it, and I spent a lot of time challenging myself." Hoops of this sort were once used for crinoline rings; Burch said she likes the idea of turning what, once upon a time, held women back into something freeing. "Where women are today," Burch says, "they're coming into their own idea of their own sexuality, their individuality, and when you think about the landscape of how you address those needs, you need to have diversity." Thus, it wasn't all minis on her spring runway: Burch also showed leg-elongating pants in a coated jersey and nylon taffeta zip polos—pieces as utterly unencumbered as that little pink dress.—N.P.

Photographed by  
Tess Ayano

Emily Ratajkowski takes a coffee break in a **Tory Burch** dress, earrings, and bracelet: [toryburch.com](http://toryburch.com). Fashion Editor: Jasmine Hassett.

**BEAUTY NOTE**  
For a universal glow, La Mer The Hydrating Illuminator levels up its signature Miracle Broth with light-diffusing abilities that work with every skin tone.

# EMILY RATAJKOWSKI

HEIGHT 5'7 HAIR *BROWN* EYES *BROWN* BUST 32 1/2 WAIST 24 HIPS 34 SHOE 8 1/2





Perfect!

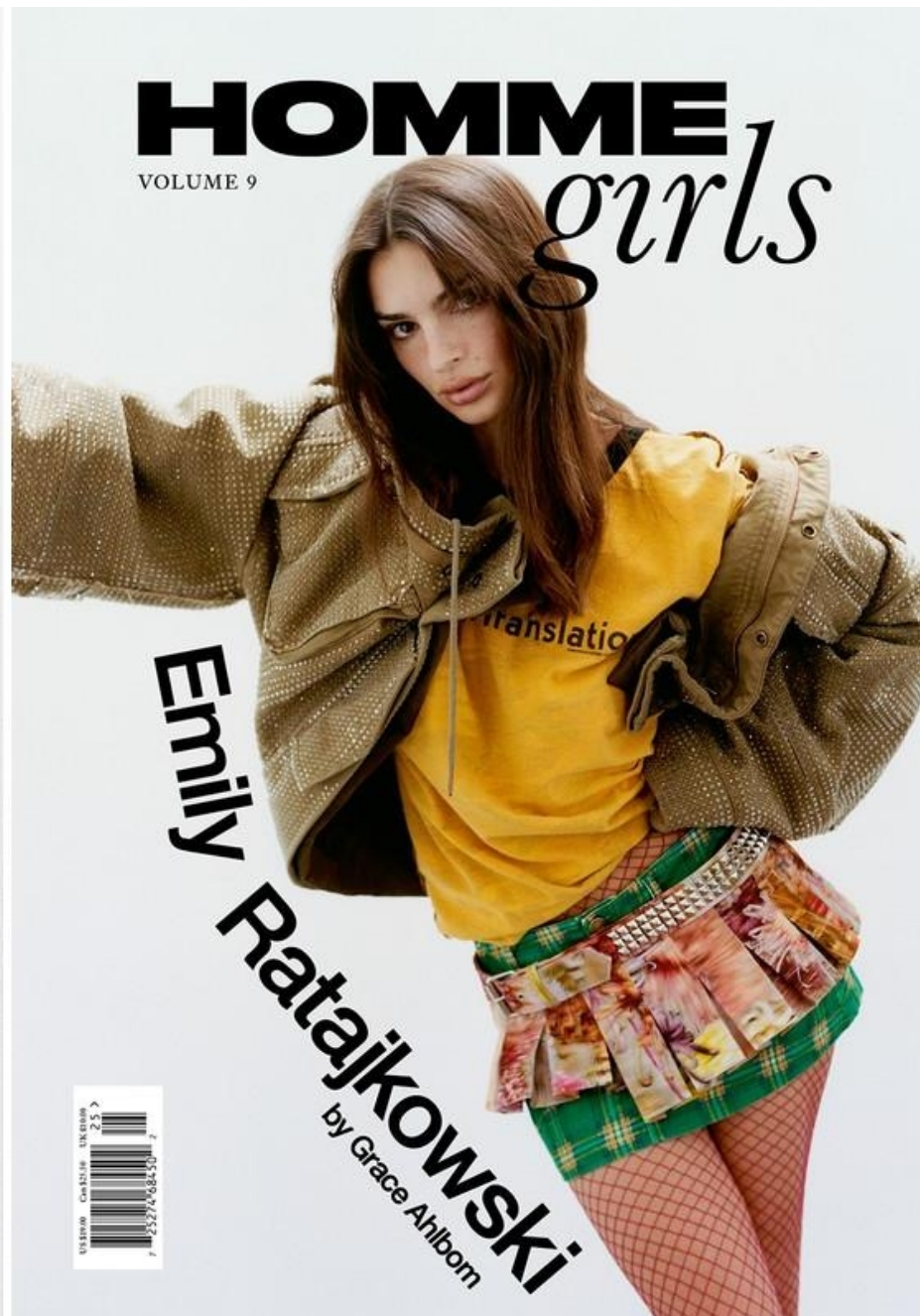


Emily Ratajkowski.

Autonomy.

# EMILY RATAJKOWSKI

HEIGHT 5'7 HAIR *BROWN* EYES *BROWN* BUST 32 1/2 WAIST 24 HIPS 34 SHOE 8 1/2



# EMILY RATAJKOWSKI

HEIGHT 5'7 HAIR *BROWN* EYES *BROWN* BUST 32 1/2 WAIST 24 HIPS 34 SHOE 8 1/2





MODEL: EMILY RATAJKOWSKI AT DANIELLE MANAGEMENT

Versace

Emily Ratajkowski wears a  
Versace gown, earrings, and shoes.

EMILY RATAJKOWSKI

HEIGHT 5'7 HAIR *BROWN* EYES *BROWN* BUST 32 1/2 WAIST 24 HIPS 34 SHOE 8 1/2

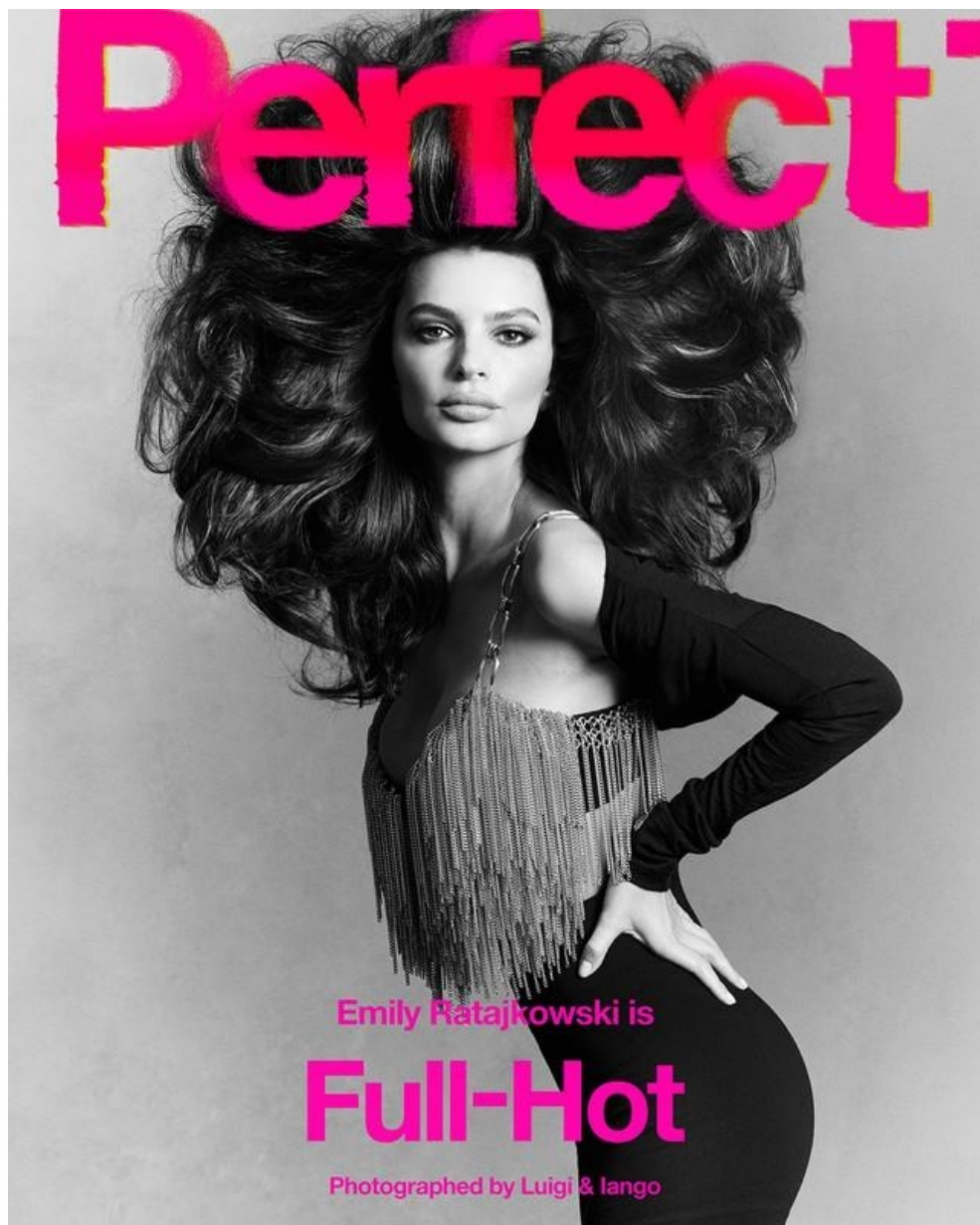


Emily wears briefs throughout. Skins  
Earrings throughout. Hair and Makeup: Jovely  
On hair: Kérastase  
Paris Blond Absolu Serum Caramel

# EMILY RATAJKOWSKI

HEIGHT 5'7 HAIR *BROWN* EYES *BROWN* BUST 32 1/2 WAIST 24 HIPS 34 SHOE 8 1/2





## EMILY RATAJKOWSKI

HEIGHT 5'7 HAIR *BROWN* EYES *BROWN* BUST 32 1/2 WAIST 24 HIPS 34 SHOE 8 1/2



# EMILY RATAJKOWSKI

HEIGHT 5'7 HAIR *BROWN* EYES *BROWN* BUST 32 1/2 WAIST 24 HIPS 34 SHOE 8 1/2



# Say it loud

A bestselling memoir, a cult swimwear brand, a high-fashion career, 35 million social media followers – Emily Ratajkowski's voice is at the centre of culture. Mahalia Chang meets her in Paris to find out what she wants to say next.

Styled by Christine Centenera. Photographed by Lachlan Bailey.

MIU MIU top, \$4,900, skirt, P.O.A., and briefs, \$730. CARTIER rings, on right hand, \$15,200, and on left hand, \$22,200, and \$11,600. DURAN LANTINI shoes, P.O.A. All prices approximate; details at [Vogue.com.au/WTB](http://Vogue.com.au/WTB).

Vogue December 2023

93

## EMILY RATAJKOWSKI

HEIGHT 5'7 HAIR *BROWN* EYES *BROWN* BUST 32 1/2 WAIST 24 HIPS 34 SHOE 8 1/2





# EMILY RATAJKOWSKI

HEIGHT 5'7 HAIR *BROWN* EYES *BROWN* BUST 32 1/2 WAIST 24 HIPS 34 SHOE 8 1/2





# EMILY RATAJKOWSKI

HEIGHT 5'7 HAIR *BROWN* EYES *BROWN* BUST 32 1/2 WAIST 24 HIPS 34 SHOE 8 1/2



Denim jacket by  
Off-White c/o Virgil  
Abloh. Knit  
bodysuit by Agent  
Provocateur.  
Makeup colors:  
Soleil Tan de Chanel  
Bronzing Makeup  
Base and Le Rouge  
Crayon de Couleur  
Jumbo Longwear Lip  
Crayon in Nude by  
Chanel. Details, see  
Shopping Guide.



Denim pants by  
Stella McCartney.  
Gold earrings by  
Jennifer Fisher and  
Ratajkowski's own.  
Makeup colors:  
Shimmering Cream  
Eye Color in Leather,  
Bronzer in Medium,  
and Rouge Rouge by  
Shiseido. Details, see  
Shopping Guide.

Watch Emily  
Ratajkowski  
transform into her  
favorite beauty  
icon at [allure.com/  
emily-video](https://www.allure.com/emily-video).

# EMILY RATAJKOWSKI

HEIGHT 5'7 HAIR *BROWN* EYES *BROWN* BUST 32 1/2 WAIST 24 HIPS 34 SHOE 8 1/2





Emily Ratajkowski, Anja Rubik, Saskia de Brauw, Sora Choi, Angelina Kendall, Nyajuok Gatdet  
par Oliver Hadlee Pearch et Charlotte Collet. Fantaisiste, énergique, élégant.  
Le luxe dans tous ses états.



EMILY  
*Ratajkowski*  
doesn't give a f\*ck  
what you think

## EMILY RATAJKOWSKI

HEIGHT 5'7 HAIR BROWN EYES BROWN BUST 32 1/2 WAIST 24 HIPS 34 SHOE 8 1/2





# EMILY RATAJKOWSKI

HEIGHT 5'7 HAIR *BROWN* EYES *BROWN* BUST 32 1/2 WAIST 24 HIPS 34 SHOE 8 1/2





## EMILY RATAJKOWSKI

HEIGHT 5'7 HAIR BROWN EYES BROWN BUST 32 1/2 WAIST 24 HIPS 34 SHOE 8 1/2





EMILY RATAJKOWSKI

HEIGHT 5'7 HAIR BROWN EYES BROWN BUST 32 1/2 WAIST 24 HIPS 34 SHOE 8 1/2





## EMILY RATAJKOWSKI

HEIGHT 5'7 HAIR *BROWN* EYES *BROWN* BUST 32 1/2 WAIST 24 HIPS 34 SHOE 8 1/2