

HEIGHT *5'10 1/2*

HAIR *BLONDE*

EYES *BLUE*

BUST *34*

WAIST *25*

HIPS *35*

SHOE *8 1/2*

dna
MODEL MANAGEMENT LLC

555 WEST 25TH ST, 6TH FL NEW YORK, NY 10001 TEL. 212.226.0080 FAX 212.226.7711 dnamodels.com



Cappello con piume, PRADA,
giacca, EMPORIO ARMANI,
camicia, SAINT LAURENT BY
ANTHONY VACCARELLO.

Nella pagina accanto:
Blusa lavallière, pantaloni,
tutto DOLCE&GABBANA;
cintura, CHANEL, orecchini,
ELIE TOP.

ANJA RUBIK



Model: ANJA RUBIK @Safe
Management.
Hair: LOUIS GEWHY
@MA+ Talent using Oribe.
Make-up: LYNSEY
ALEXANDER
@Jolly Collective.
Manicure: CHLOE NGUYEN
@Special Management.
On-Set Producer: SIMON
MALIVINDI.
Stylist Assistants: JORGE
GARCIA VALERO, LOUISE
VICTOR.



Giacca, camicia, cravatta.
Nella pagina accanto.
Cappotto, camicia.
Tutto SAINT LAURENT BY
ANTHONY VACCARELLO.

Willy Vanderpelt

ANJA RUBIK

HEIGHT 5'10 1/2 HAIR *BLONDE* EYES *BLUE* BUST 34 WAIST 25 HIPS 35 SHOE 8 1/2



ANJA RUBIK

HEIGHT 5'10 1/2 HAIR *BLONDE* EYES *BLUE* BUST 34 WAIST 25 HIPS 35 SHOE 8 1/2



ANJA RUBIK

HEIGHT 5'10 1/2 HAIR *BLONDE* EYES *BLUE* BUST 34 WAIST 25 HIPS 35 SHOE 8 1/2



ANJA RUBIK

HEIGHT 5'10 1/2 HAIR *BLONDE* EYES *BLUE* BUST 34 WAIST 25 HIPS 35 SHOE 8 1/2



ANJA RUBIK

HEIGHT 5'10 1/2 HAIR BLONDE EYES BLUE BUST 34 WAIST 25 HIPS 35 SHOE 8 1/2



ANJA RUBIK

HEIGHT 5'10 1/2 HAIR *BLONDE* EYES *BLUE* BUST 34 WAIST 25 HIPS 35 SHOE 8 1/2

Page opposée : robe en soie Miu Miu.
Bague en acrylique Monies.

Débardeur en soie brodé de sequins,
pantalou en soie Emporio Armani.
Collier en chaîne Monies.



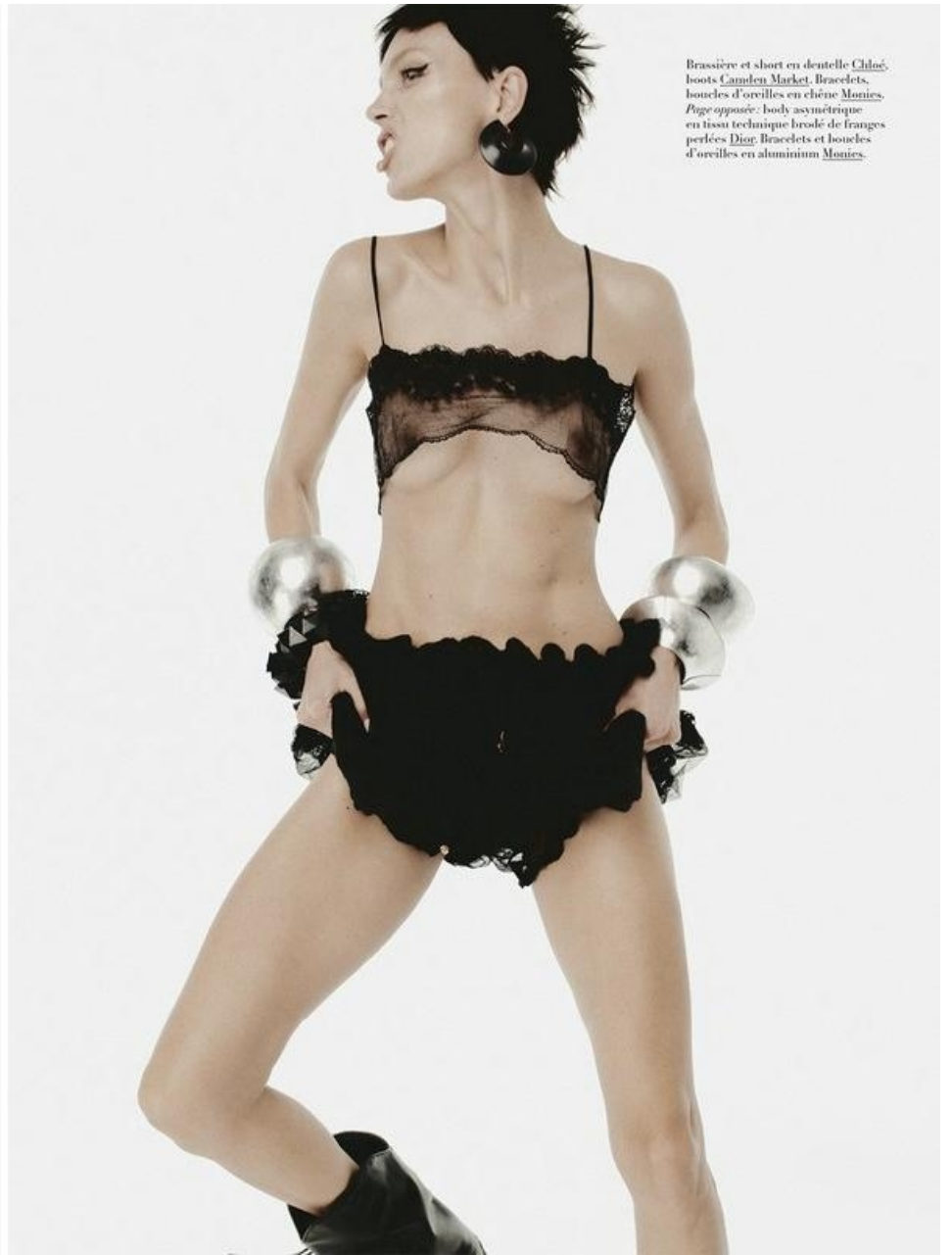
ANJA RUBIK

HEIGHT 5'10 1/2 HAIR BLONDE EYES BLUE BUST 34 WAIST 25 HIPS 35 SHOE 8 1/2

Robe brodée de sequins miroirs
et perles Gucci. Bracelets Monies.
Page opposée: body Trompe L'œil
en broderie de lingerie avec
pantalon et chemise cintrée
en dentelle brodée Balenciaga.



Brassière et short en dentelle Chloé,
boots Camden Market. Bracelets,
boucles d'oreilles en chêne Monies.
Page opposée: body asymétrique
en tissu technique brodé de franges
perlées Dior. Bracelets et boucles
d'oreilles en aluminium Monies.



ANJA RUBIK

HEIGHT 5'10 1/2 HAIR BLONDE EYES BLUE BUST 34 WAIST 25 HIPS 35 SHOE 8 1/2



ANJA RUBIK

HEIGHT 5'10 1/2 HAIR *BLONDE* EYES *BLUE* BUST 34 WAIST 25 HIPS 35 SHOE 8 1/2



192

Collier effet bombé ras du cou en métal argenté Schiaparelli.

Manteau à franges de cuir Alain.

HARPER'S BAZAAR



ANJA RUBIK

HEIGHT 5'10 1/2 HAIR *BLONDE* EYES *BLUE* BUST 34 WAIST 25 HIPS 35 SHOE 8 1/2



Robe transparente à franges
Ferragamo, boots Camden
Market, Bracelets Monies.
Page opposée: combinaison ballon
fluide, veste brodée, souliers
en acrylique Louis Vuitton.



ANJA RUBIK

HEIGHT 5'10 1/2 HAIR BLONDE EYES BLUE BUST 34 WAIST 25 HIPS 35 SHOE 8 1/2

Fall 2022

"I wanted to take the codes of the bourgeoisie but twist them for today, with exaggerated coats with big shoulders and skirts that were slit but very austere."
Worn by Anja Rubik.



Fall 2024

"This collection, titled 'Colant' or 'Hose', was important because it was the opposite of commercial—everything was experimental and fragile. This was a moment when everyone was afraid of losing clients and wanted to try to sell as much as possible. I wanted to calm down and do things that weren't made to be sold. The show really made an impression."
Worn by Anja Rubik.



ANJA RUBIK

HEIGHT 5'10 1/2 HAIR *BLONDE* EYES *BLUE* BUST 34 WAIST 25 HIPS 35 SHOE 8 1/2



ANJA RUBIK

HEIGHT 5'10 1/2 HAIR BLONDE EYES BLUE BUST 34 WAIST 25 HIPS 35 SHOE 8 1/2



ANJA RUBIK

HEIGHT 5'10 1/2 HAIR *BLONDE* EYES *BLUE* BUST 34 WAIST 25 HIPS 35 SHOE 8 1/2

All clothing GIVENCHY
Sunglasses ANONY EYEWEAR
Watch and bracelet BOUCHERON
Belt CHLOÉ HEARTS



ANJA RUBIK

HEIGHT 5'10 1/2 HAIR *BLONDE* EYES *BLUE* BUST 34 WAIST 25 HIPS 35 SHOE 8 1/2



BLACK SILK LONG SLEEVES
BLACK AND WHITE LEATHER BELT AND PLEATED-LEATHER
"TV KNOT" SHOES LOUIS VUITTON
WITH EYEWEAR PRADA
louis vuitton

WILL CHOU, MCL CHAIR

ANJA RUBIK

HEIGHT 5'10 1/2 HAIR BLONDE EYES BLUE BUST 34 WAIST 25 HIPS 35 SHOE 8 1/2

PURPLE

the essence of fashion issue

#41 s/s 2024

anja rubik in saint laurent



ANJA RUBIK

HEIGHT 5'10 1/2 HAIR *BLONDE* EYES *BLUE* BUST 34 WAIST 25 HIPS 35 SHOE 8 1/2



ANJA RUBIK

HEIGHT 5'10 1/2 HAIR *BLONDE* EYES *BLUE* BUST 34 WAIST 25 HIPS 35 SHOE 8 1/2



LDEN HOUR 인디나 비카델로가 꿈꾸는 크루즈 일렉산의 중심에는 색감이 지는 바닷가를 떠올리는 금빛 달무리 있다. 안 나트와 실로 톤 드레스가 그 세상을 대변한다.



ANJA RUBIK

HEIGHT 5'10 1/2 HAIR *BLONDE* EYES *BLUE* BUST 34 WAIST 25 HIPS 35 SHOE 8 1/2



ANJA RUBIK

HEIGHT 5'10 1/2 HAIR *BLONDE* EYES *BLUE* BUST 34 WAIST 25 HIPS 35 SHOE 8 1/2



ANJA RUBIK

HEIGHT 5'10 1/2 HAIR *BLONDE* EYES *BLUE* BUST 34 WAIST 25 HIPS 35 SHOE 8 1/2



ANJA RUBIK

HEIGHT 5'10 1/2 HAIR *BLONDE* EYES *BLUE* BUST 34 WAIST 25 HIPS 35 SHOE 8 1/2



Models: LIBBY BENNETT
 @Special Models, CHARLES
 MATADIN @IMG Models,
 JULIA CUMMINGS
 @Supreme New York, ELLA
 MCCUTCHEON @Ford Models
 Paris and DNA Models,
 NIGINA SHARIPOVA
 @Elite New York and Out Mgmt.,
 DOMINIC SESSA, SIHANA
 SHALAJ @IMG Models,
 VIVIENNE ROHNER @Heroes
 Models, SARAH BROWN
 @The Society, ANJA RUBIK
 @Safe Mgmt, BIBI
 BRESLIN @IMG Models,
 REBECCA DAYAN @ZZO,
 NATALIE BRUMLEY @Next.
 Hair: WARD STEGERHOEK
 @Home Agency.
 Make-up: SAM VISSER
 @Art Partner, LISA BUTLER
 @Bryant Artists.
 Manicure: DEBORAH
 LIPPMANN @Home Agency.
 Producers: JOHN NADHAZI,
 MICHAEL GLEESON.
 Lighting Director: JODOKUS
 DRIESSEN.
 Stylist Assistants: JORGE
 GARCIA, CAMI PESSIN.



ANJA RUBIK

HEIGHT 5'10 1/2 HAIR *BLONDE* EYES *BLUE* BUST 34 WAIST 25 HIPS 35 SHOE 8 1/2