

DORIT REVELIS
Vogue Italia January 2018
Harley Weir

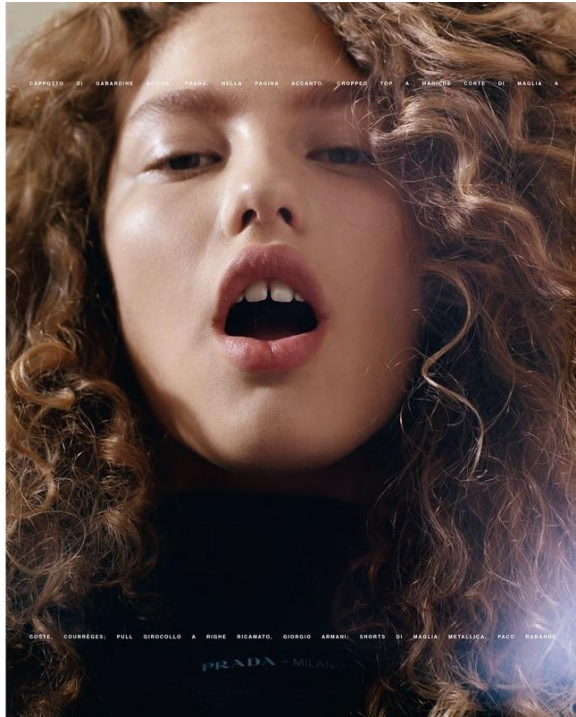
dna
MODEL MANAGEMENT LLC

555 WEST 25TH ST, 6TH FL NEW YORK, NY 10001 TEL 212.226.0080 FAX 212.226.7711 dnamodels.com



DORIT REVELIS

HEIGHT 5'9 1/2 HAIR *BLONDE* EYES *BLUE/GREEN* BUST 34 WAIST 26 1/2 HIPS 36 SHOE 8 1/2



DORIT REVELIS

HEIGHT 5'9 1/2 HAIR *BLONDE* EYES *BLUE/GREEN* BUST 34 WAIST 26 1/2 HIPS 36 SHOE 8 1/2



ABITI: ABBIGLIATO - H&M, DIMAGLIA, JW ANDERSON, BELLA PASCAL, VICCIANTO, ABITO DI BIESS, SAINT LAURENT BY ANTONIO VACCARELLO, DOLCEVITA, PACO RABANNE.



GIACCA DI SETA E LEGGINGS DI VISCOSA STAMPATA, VERSACE, TOP ABBIGLIATO, JW ANDERSON, SANDALI MISSONI, HAIR AKKI, MAKE-

UP, THOMAS DE KLUYVER, ENTRAMB, ART PARTNER, PRODUCTION E ON SET COLLECTION, RAGI DHALAKIA, ART PARTNER.

DORIT REVELIS

HEIGHT 5'9 1/2 HAIR *BLONDE* EYES *BLUE/GREEN* BUST 34 WAIST 26 1/2 HIPS 36 SHOE 8 1/2