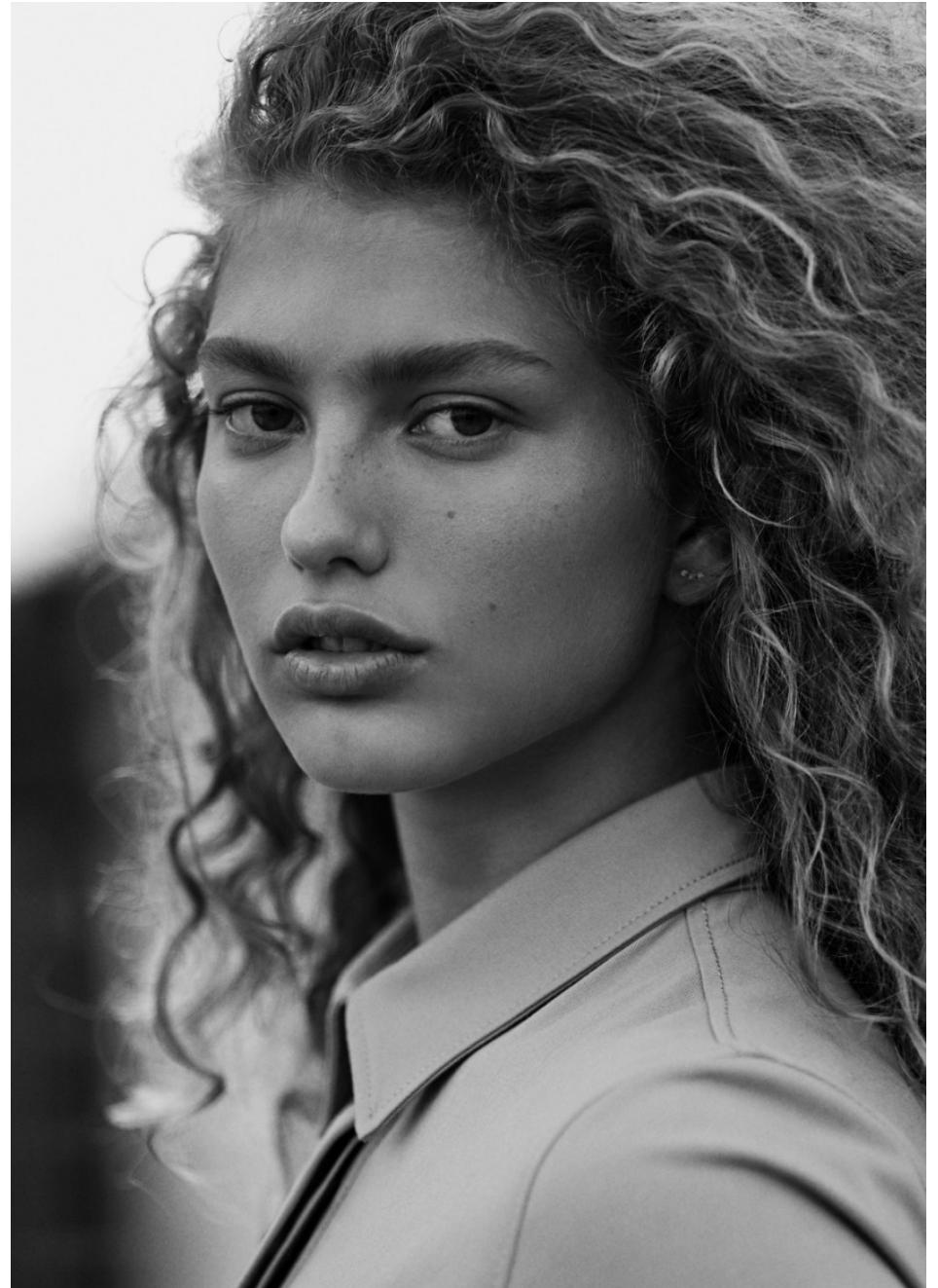


HEIGHT 5'9  
HAIR *BLONDE*  
EYES *BLUE/GREEN*  
BUST 33 1/2  
WAIST 25  
HIPS 36  
SHOE 9

**dna**  
MODEL MANAGEMENT LLC

555 WEST 25TH ST, 6TH FL NEW YORK, NY 10001 TEL. 212.226.0080 FAX 212.226.7711 [dnamodels.com](http://dnamodels.com)



DORIT REVELIS



*Dorit wears swimsuit by Topshop — Previous page: Iselin wears top by Editions M.R. and trousers by Raf Simons*

239



*Dorit wears dress and coat by Balenciaga — Page 240-241: Iselin wears jumpsuit by Joseph*

242

# DORIT REVELIS

HEIGHT 5'9 HAIR *BLONDE* EYES *BLUE/GREEN* BUST 33 1/2 WAIST 25 HIPS 36 SHOE 9



258

# DORIT REVELIS

HEIGHT 5'9 HAIR *BLONDE* EYES *BLUE/GREEN* BUST 33 1/2 WAIST 25 HIPS 36 SHOE 9

417



Opposite page: Sara wears top and underwear by Una Hayde. Bracelet by Abbie Stirrup. Necklace by Philipp Haemmerle. Shoes by Loewe.

This page: Dorit wears dress by Loewe.

418



Opposite page: Sara wears dress by Noir Kei Ninomiya. Headpiece custom-made by Philipp Haemmerle.

This page: Dorit wears blanket by CALVIN KLEIN 205W39NYC.

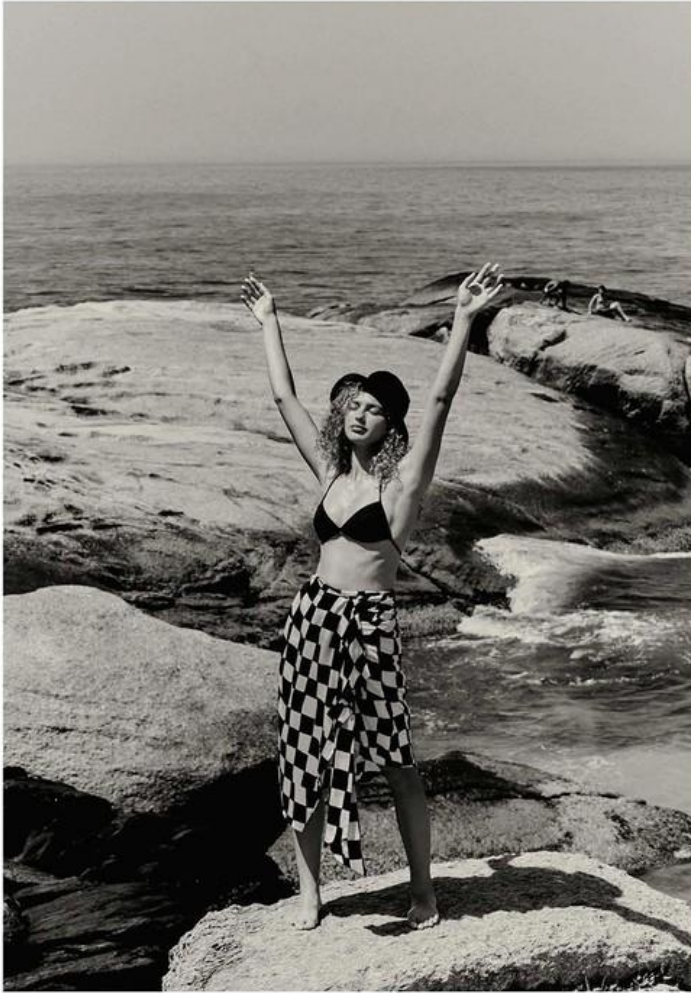
# DORIT REVELIS

HEIGHT 5'9 HAIR *BLONDE* EYES *BLUE/GREEN* BUST 33 1/2 WAIST 25 HIPS 36 SHOE 9



## DORIT REVELIS

HEIGHT 5'9 HAIR *BLONDE* EYES *BLUE/GREEN* BUST 33 1/2 WAIST 25 HIPS 36 SHOE 9



Bikini top (sold as set) by Alessandra Rich, \$230; skirt by Oscar De La Renta, \$1,200; hat by Reinhard Plank, \$230  
Opposite: T-shirt by Paco Rabanne x Peter Saville, \$250, at Net-A-Porter.com; briefs by Absysse, \$100; male models wear trunks (left), model's own; wetsuit (right) by Ambush \$550



## DORIT REVELIS

HEIGHT 5'9 HAIR *BLONDE* EYES *BLUE/GREEN* BUST 33 1/2 WAIST 25 HIPS 36 SHOE 9



# DORIT REVELIS

HEIGHT 5'9 HAIR *BLONDE* EYES *BLUE/GREEN* BUST 33 1/2 WAIST 25 HIPS 36 SHOE 9



246 *Dorit wears jumper by Sandro and necklace by Catbird—Previous page: Dorit wears top by Jil Sander and trousers by Alexander Wang*

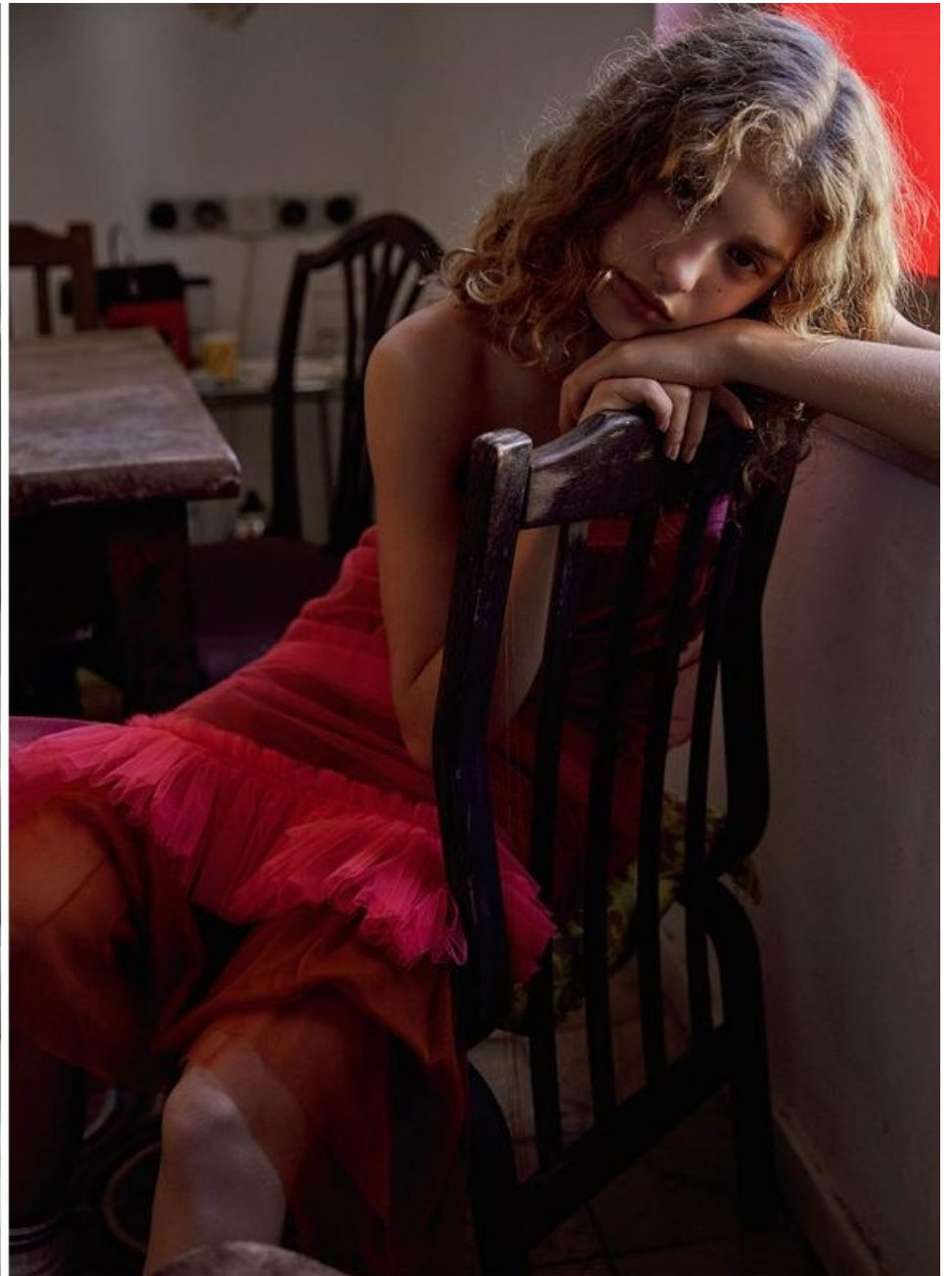


254 *Dorit wears skirt, jacket and trousers by Prada*

# DORIT REVELIS

HEIGHT 5'9 HAIR *BLONDE* EYES *BLUE/GREEN* BUST 33 1/2 WAIST 25 HIPS 36 SHOE 9





# DORIT REVELIS

HEIGHT 5'9 HAIR *BLONDE* EYES *BLUE/GREEN* BUST 33 1/2 WAIST 25 HIPS 36 SHOE 9



# DORIT REVELIS

HEIGHT 5'9 HAIR *BLONDE* EYES *BLUE/GREEN* BUST 33 1/2 WAIST 25 HIPS 36 SHOE 9



GIACCA DI SETA E LEGGINGS DI VISCOSA STAMPATA, VERSACE; TOP ARRICCIAIO, JW ANDERSON; SANDALI MISSONI; HAIR AKKI, MAKE-

UP THOMAS DE KLUYVER ENTRAMBI @ ART PARTNER; PRODUCTION E ON SET PRODUCTION RAGI DHOLAKIA @ ART PARTNER.



MAGLIA EXTRA LUNGA DI SETA A STAMPA FOUERD, CELINE, NELLA PAGINA ACCANTO. TOP SENZA MANICHE E GONNA DI TWEED SPRANGIATO.

CHANEL; TOP DI MAGLIA A MANICHE CORTE, COURREGES; MINIABITO DI PAILLETES, PACO RABANNE; CAPPELLO ELISABETTA FRANCHI.

# DORIT REVELIS

HEIGHT 5'9 HAIR *BLONDE* EYES *BLUE/GREEN* BUST 33 1/2 WAIST 25 HIPS 36 SHOE 9



## DORIT REVELIS

HEIGHT 5'9 HAIR *BLONDE* EYES *BLUE/GREEN* BUST 33 1/2 WAIST 25 HIPS 36 SHOE 9